

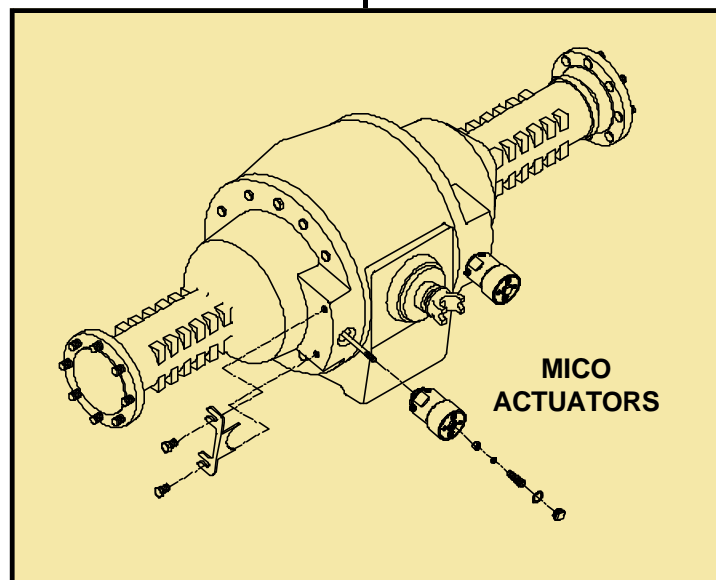
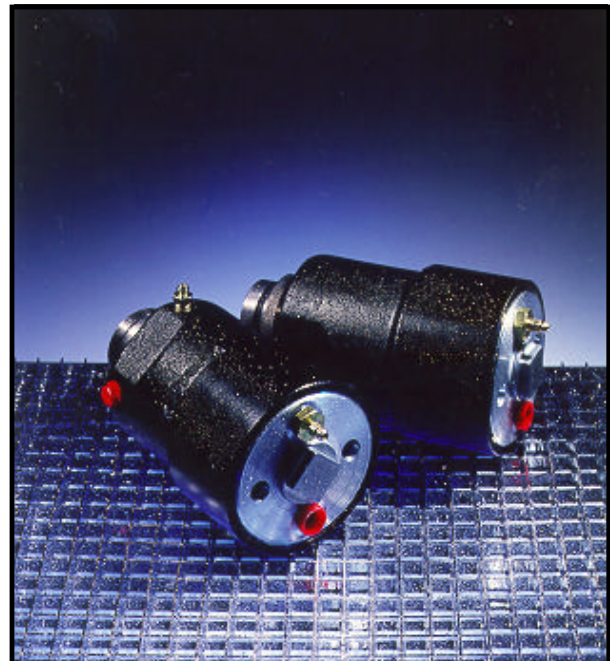
Millions of New Holland Drive Axles have been built for off-highway, heavy-duty equipment applications. These axles feature integral, mechanically actuated brakes. MICO's Brake Actuators are designed to install over the existing mechanical push rod. The service brake section is pressure activated. Push rod pull force may be determined by multiplying the pressure by the hydraulic apply effective area found in the chart.

### MICO Actuators . . .

- are designed for use with New Holland D-45, D-60, D-62 series axles
- can be installed with little or no modification to the original axle
- are complete, self-contained, and totally enclosed units which make them ideal for use in adverse environmental conditions
- provide service and parking brakes or parking brakes depending on the model selected



## BRAKE ACTUATORS for OEM Drive Axles



MICO Spring/Hydraulic Apply and Spring Apply Models are designed for use with New Holland D-45, D-60 and D-62 series axles. Your application may vary. If you are

unsure of which MICO Actuators will fit your axle, consult the factory. All MICO Actuators are designed for use with mineral based hydraulic oil.

## MICO SPRING/HYDRAULIC APPLY MODELS

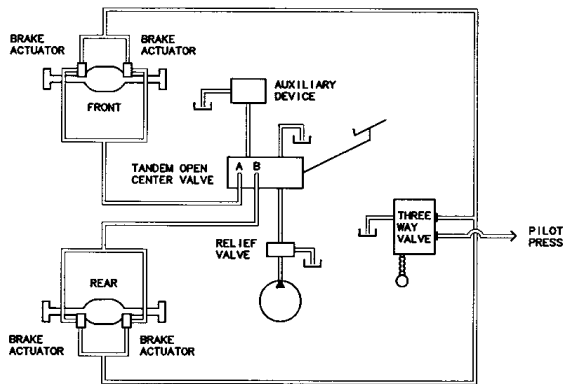
Model No.	03-460-220	03-460-222	03-460-250 *	03-460-252	03-460-256	03-460-270	03-460-272
Axle Model No.	D-60 & D-62	D-45	D-60 & D-62	D-60 & D-62	D-45	D-60 & D-62	D-45
▲ Pull Rod Thread	1/2 - 20	7/16 - 20	12 mm	1/2 - 20	7/16 - 20	1/2 - 20	7/16 - 20
Stroke	.5 in.	.5 in.	.5 in.	.5 in.	.5 in.	.5 in.	.5 in.
+ Spring Apply Force	1050 lbs.	1050 lbs.	1240 lbs.	1050 lbs.	1050 lbs.	1050 lbs.	1050 lbs.
Min. Spring Release	160 psi	160 psi	157 psi	160 psi	160 psi	160 psi	160 psi
Max. Spring Release	3000 psi	3000 psi	3000 psi	3000 psi	3000 psi	3000 psi	3000 psi
Max. Volume Spring Release	3.93 in. <sup>3</sup>	3.93 in. <sup>3</sup>	3.93 in. <sup>3</sup>	3.93 in. <sup>3</sup>	3.93 in. <sup>3</sup>	3.93 in. <sup>3</sup>	3.93 in. <sup>3</sup>
Hyd. Apply Eff. Area	.590 in. <sup>2</sup>	.590 in. <sup>2</sup>	.920 in. <sup>2</sup>	.920 in. <sup>2</sup>	.920 in. <sup>2</sup>	2.062 in. <sup>2</sup>	2.062 in. <sup>2</sup>
Max. Pressure Hyd. Apply	2600 psi	2600 psi	1700 psi	1700 psi	1700 psi	750 psi	750 psi
Max. Volume Hyd. Apply	.295 in. <sup>3</sup>	.295 in. <sup>3</sup>	.46 in. <sup>3</sup>	.46 in. <sup>3</sup>	.46 in. <sup>3</sup>	1.031 in. <sup>3</sup>	1.031 in. <sup>3</sup>

+ 1050 lbs. spring force is calculated at .187 in. of slack compression or free rod pull.

\* For use with existing dust boot shipped with the axle.

▲ Confirm pull rod thread prior to selecting actuators.

## TYPICAL SYSTEM SCHEMATIC



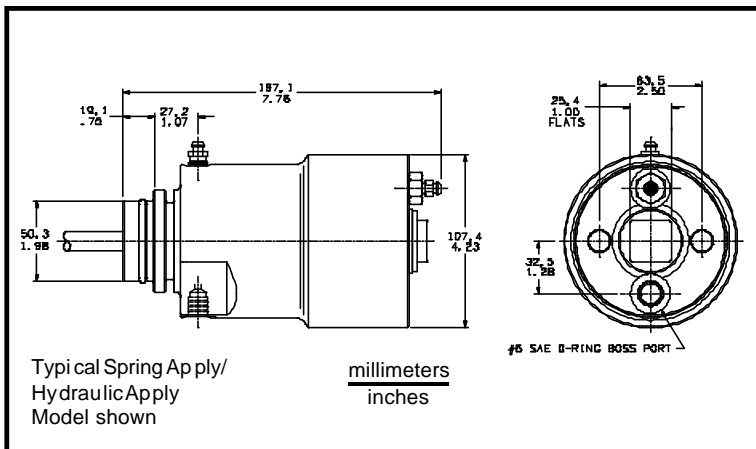
## MICO SPRING APPLY MODELS

Model No.	03-460-200	03-460-204	03-460-206 *
Axle Model No.	D-60 & D-62	D-45	D-60 & D-62
▲ Pull Rod Thread	1/2 - 20	7/16 - 20	12 mm
Stroke	.5 in.	.5 in.	.5 in.
+ Spring Apply Force	1050 lbs.	1050 lbs.	1050 lbs.
Min. Spring Release	160 psi	160 psi	160 psi
Max. Volume Spring Release	3.93 in. <sup>3</sup>	3.93 in. <sup>3</sup>	3.93 in. <sup>3</sup>
Max. Input Pressure	3000 psi	3000 psi	3000 psi

+ 1050 lbs. spring force is calculated at .187 in. of slack compression or free rod pull.

\* For use with existing dust boot shipped with the axle.

▲ Confirm pull rod thread prior to selecting actuators.



### MICO, Incorporated

1911 Lee Boulevard (Zip Code 56003-2507)  
P.O. Box 8118 / North Mankato, MN U.S.A. 56002-8118  
☎ (507) 625-6426 Facsimile (507) 625-3212

### MICO West Division

701 East Francis Street (Zip Code 91761-5514)  
P.O. Box 9058 / Ontario, CA U.S.A. 91762-9058  
☎ (909) 947-4077 Facsimile (909) 947-6054

### MICO Europe Ltd.

Goodwood Road  
Pershore  
Worcestershire / WR102RY / England  
☎ 01386 555562 Facsimile 01386 553955

Form No. 80-460-034 Revised 3/97 Printed in U.S.A.