



Product Bulletin

Load Sensing Accumulator Charging Valve with Load Sense Bleed

DESCRIPTION

Load sensing accumulator charging valve with an integral solenoid valve to block the load sensing signal when energized.

This high-pressure charge valve operates in a flow and pressure on demand system.

The control section of this valve sends a pilot signal to a load sense pump when fluid is required. It maintains and isolates hydraulic energy in two separate accumulators allowing the pump to stand by when there is no demand for fluid.

This charge valve features a solenoid-operated valve that can be used to unload the pilot signal from the charge valve to the pump at startup.

Typical applications would include off-highway vehicles with split braking systems that have two or more accumulators and a tandem or dual full power brake valve. The load sense-unloading feature is for vehicles that require startup at low hydraulic load such as vehicles that operate in cold climates.

FEATURES

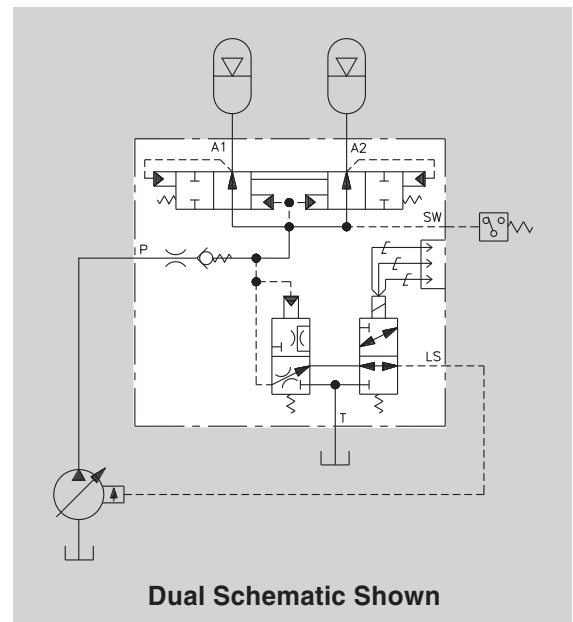
- Solenoid feature allows machine to be started without immediately charging accumulators
- Solenoid feature is desirable in cold start conditions and marginal horsepower applications
- Solenoid valve could be controlled by a timer, ignition switch, or computer system
- Available in versions for single or dual accumulator charging
- Cut in and cut out pressures are preset at the factory according to specification requirements
- Accumulator charging rate is also factory set
- If solenoid stays on, accumulators WILL NOT CHARGE

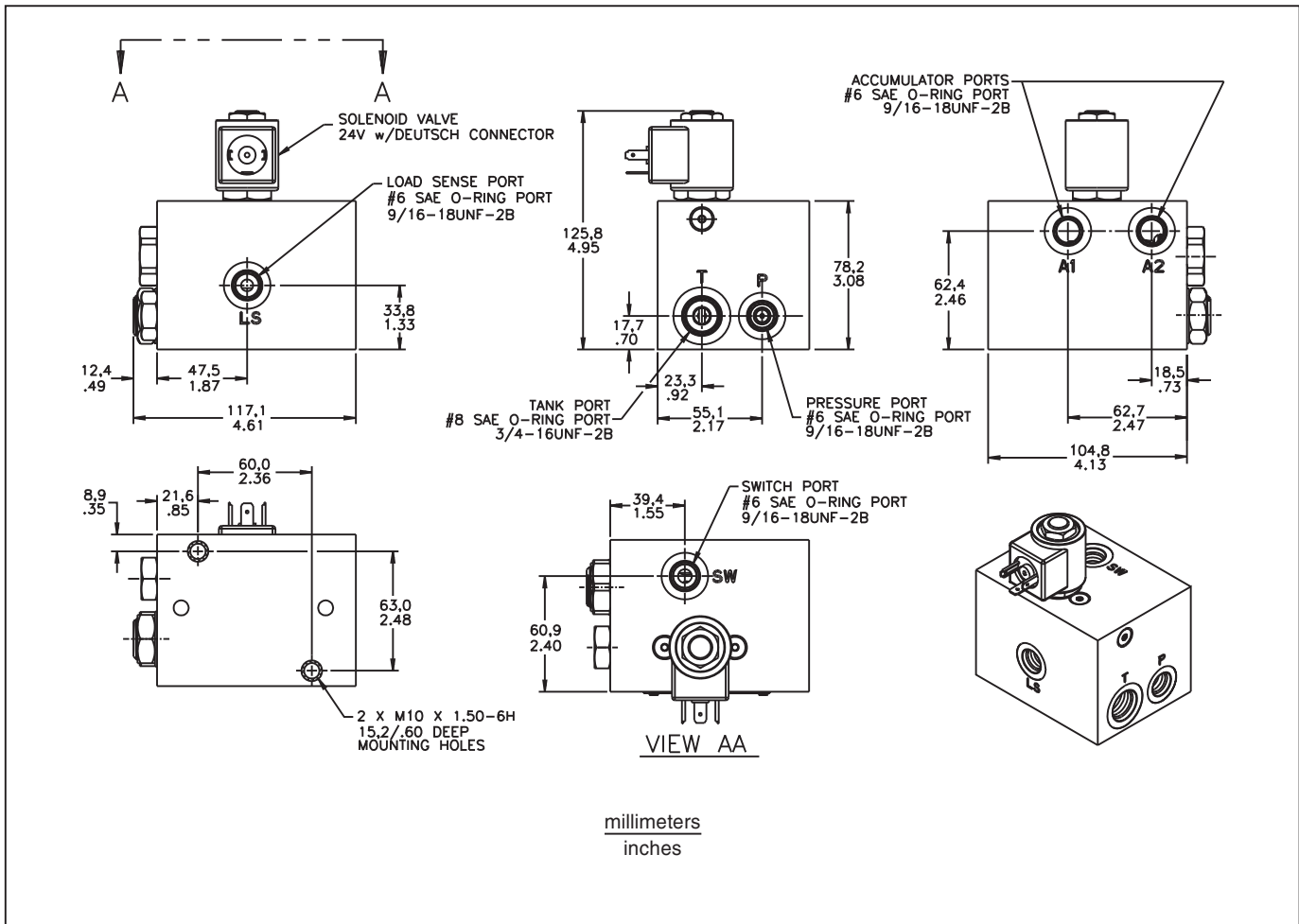


SPECIFICATIONS

System pressure	to 250 bar (3625 PSI)
Accumulator pressure	custom to application
Accumulator charging rate	1.9-18.9 L/min (0.5-5.0 GPM)
Solenoid Valve	
Operating voltage.....	24 VDC
Electrical connector.....	DIN 43650

Consult factory for other voltages and electrical connector styles.





MICO is a registered trademark of MICO, Inc. MICO is registered in the U.S. Patent and Trademark Office as well as in Australia, Indonesia, Japan, Peoples Republic of China, South Korea, and the European Community.



Innovative Braking and Controls Worldwide

MICO, Incorporated

1911 Lee Boulevard

North Mankato, MN U.S.A. 56003-2507

Tel: 507 625 6426 Fax: 507 625 3212