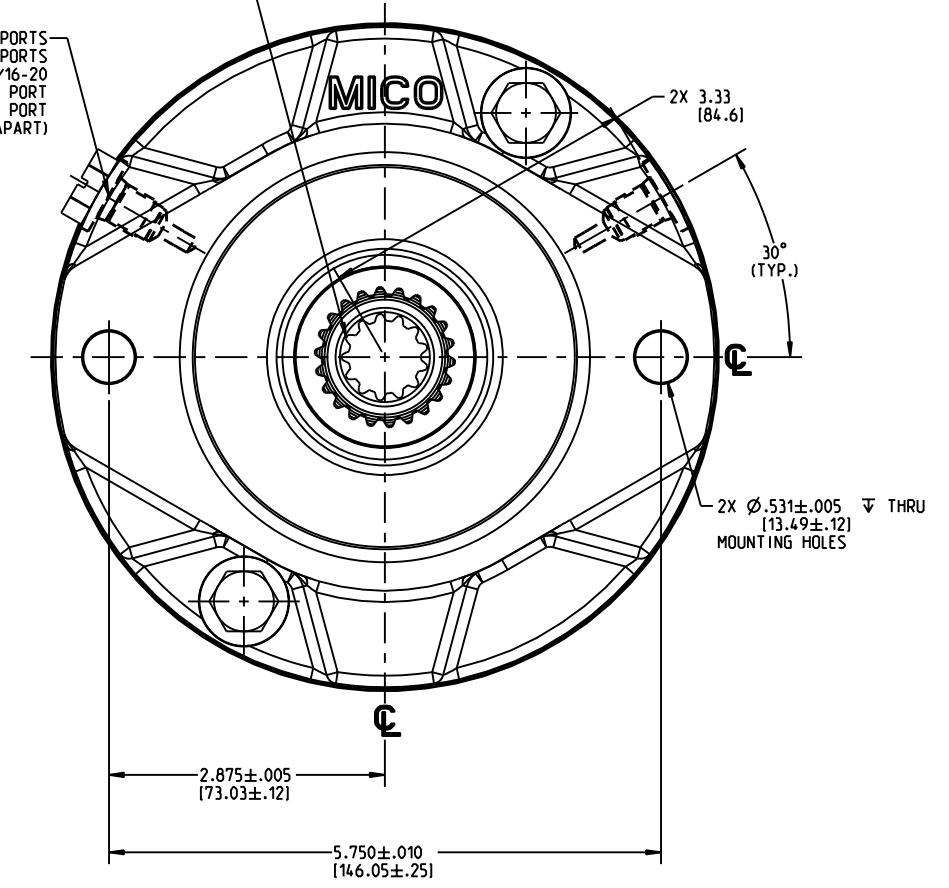


30° INVOLUTE SPLINE-INTERNAL  
13 TOOTH 16/32 PITCH  
FLAT ROOT, SIDE FIT, CLASS 7  
PER ANSI B92. 1-1970

2X BRAKE RELEASE PORTS  
#4 SAE O-RING PORTS  
PER SAE J1926/1: 7/16-20  
(1) PRESSURE PORT  
(1) BLEEDER PORT  
(120° APART)



**NOTES:**

1. USE MINERAL BASE HYDRAULIC OIL ONLY FOR BRAKE RELEASE.
2. DIMENSIONS MAY VARY BETWEEN UNITS AND ARE FOR REFERENCE PURPOSES ONLY. MILLIMETER VALUES MAY NOT BE AN EXACT CONVERSION OF INCH VALUES.
3. LINING REPAIR KIT P/N 20-060-102
4. BEARING REPAIR KIT P/N 02-500-210
5. O-RING REPAIR KIT P/N 02-500-207
6. SPRING REPAIR KIT P/N 12-501-513
7. BRAKE SURFACE COATING: GREY GLOSSY POLYURETHANE PAINT.

**SPECIFICATIONS:**

TYPE:	DRY MULTIPLE DISC BRAKE, SPRING APPLY, HYDRAULIC RELEASE.
MAXIMUM SPEED:	4,000 RPM SHAFT SPEED CAPABILITY SPECIFIED IS FOR BRAKE IN RELEASED CONDITION. ENERGY ABSORPTION DURING APPLY CYCLE MUST BE CAREFULLY EXAMINED FOR EACH APPLICATION.
TORQUE RATING:	1,600 LBIN STATIC (BREAKAWAY) ACTUAL TORQUE MAY VARY BY UP TO 10% DUE TO MANUFACTURING TOLERANCES.
RELEASE PRESSURE:	110 PSI INITIAL, 130 PSI FULL & 1,500 PSI MAX.
VOLUME OF OIL REQUIRED TO RELEASE BRAKE:	0.6 IN <sup>3</sup> .MIN., 1.0 IN <sup>3</sup> .MAX.
LINING MATERIAL:	SINTERED BRONZE
APPROXIMATE WEIGHT:	23 LB

**INCH**  
**[MILLIMETER]**

COMPONENT AND SYSTEM RECOMMENDATIONS MADE BY MICO, INC ARE BASED ON INFORMATION SUPPLIED BY POTENTIAL USER AND/OR SYSTEM DESIGNER. THE POTENTIAL USER AND/OR DESIGNER MUST MAKE FINAL ACCEPTANCE AND APPROVAL OF COMPONENTS AND SYSTEM AFTER TESTING PERFORMANCE ON AN ACTUAL APPLICATION FOR WHICH SYSTEM WAS DESIGNED.

MICO, INC CLAIMS PROPRIETARY RIGHTS TO THE MATERIAL DISCLOSED IN THIS DOCUMENT. THIS DOCUMENT IS PROVIDED IN CONFIDENCE AND MAY NOT BE REPRODUCED OR DISCLOSED WITHOUT WRITTEN PERMISSION FROM MICO, INC. COPYRIGHT MICO, INC. ALL RIGHTS RESERVED.

<b>MICO</b> North Mankato, Minnesota USA				
SCALE 0.500	TITLE SLMB-131316-BL MULTIPLE DISC BRAKE	SIZE B	DRAWING NUMBER 02-556-316	REV L
DWN RGS1 2012-01-18	APVD PROD ENGR PJS 2013-02-11			
X NO	APVD ENGR RV 02/18/12		CUSTOMER COPY	