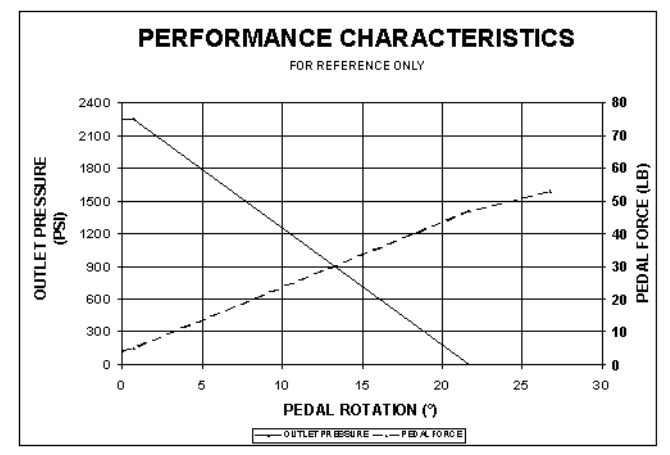
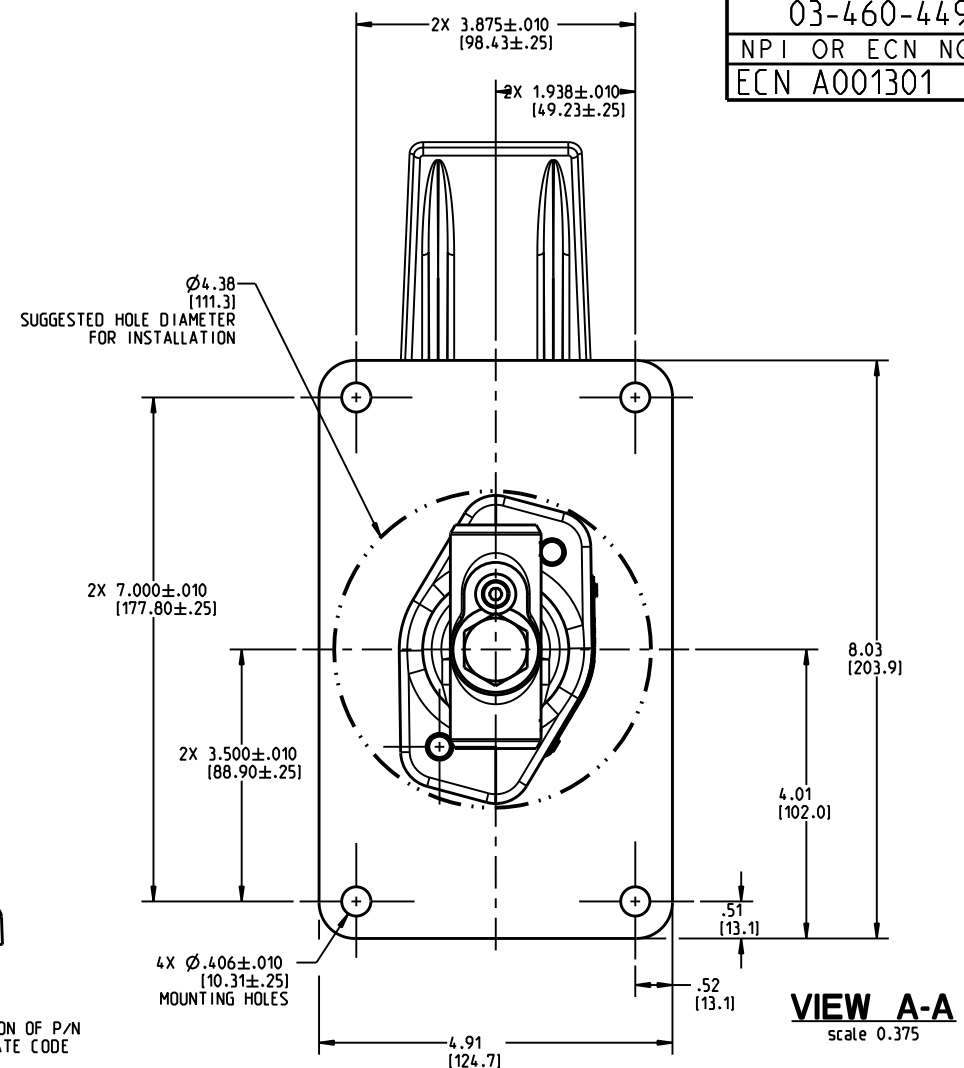
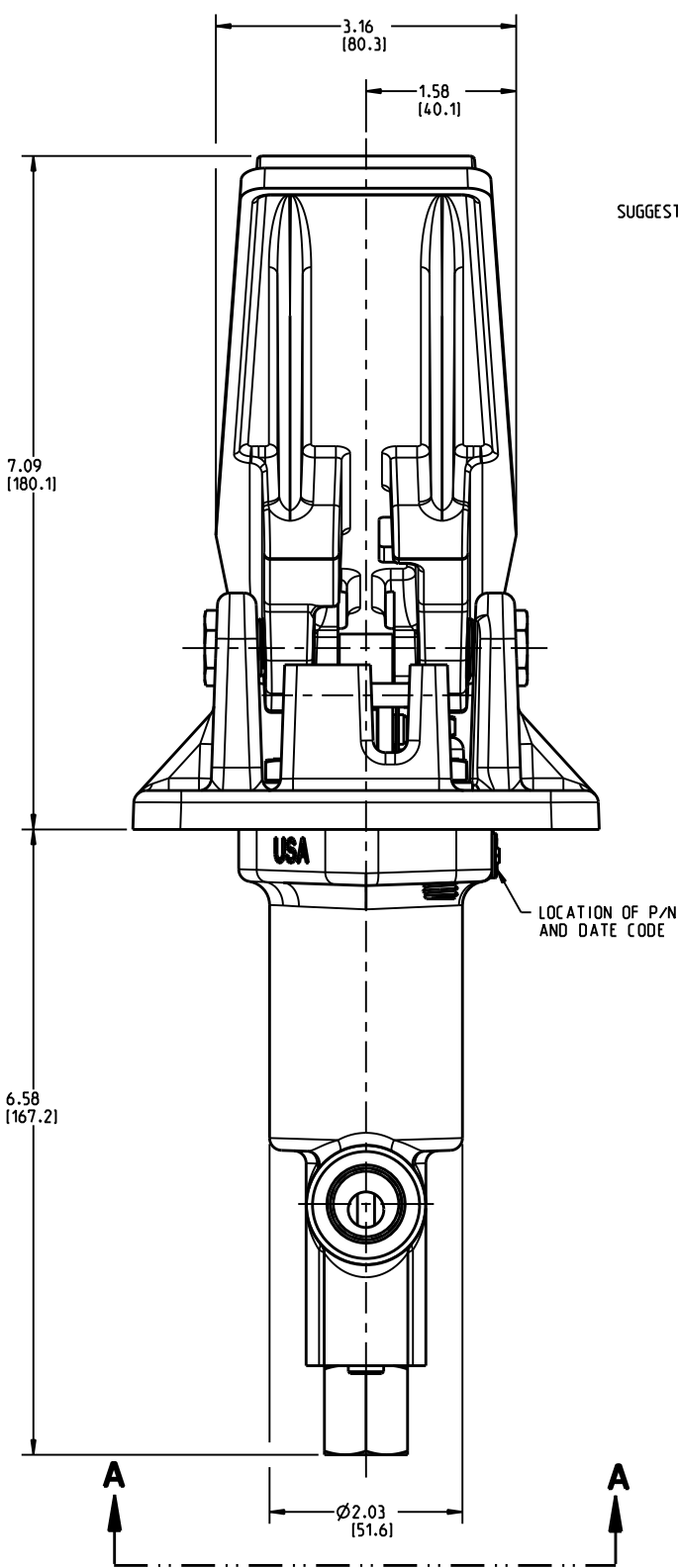
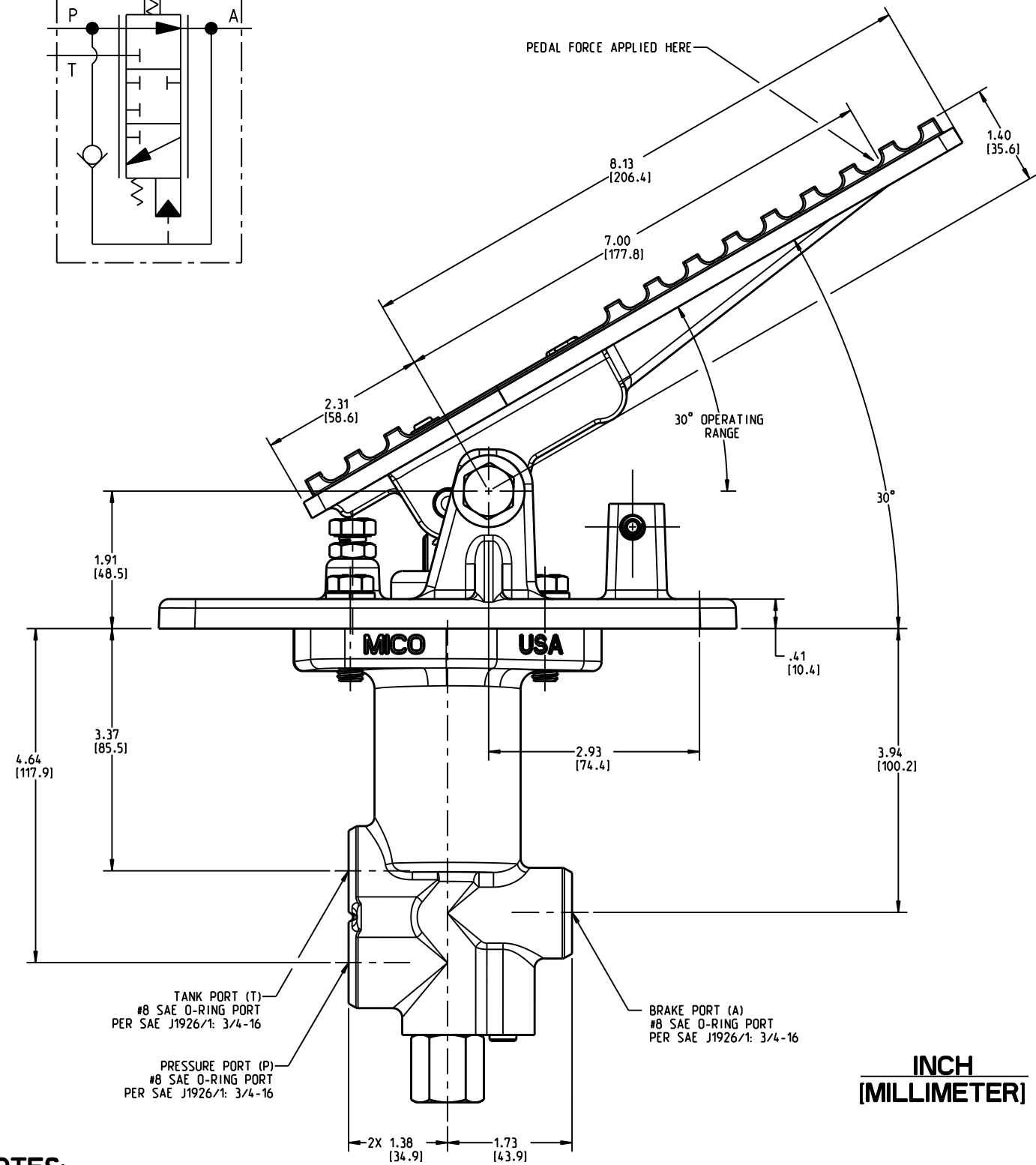
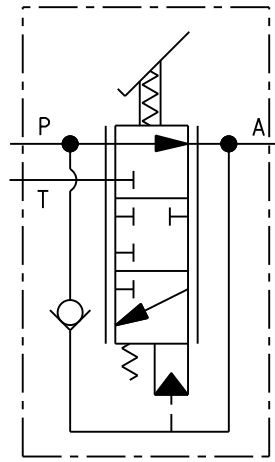


DRAWING NUMBER
03-460-449
NPI OR ECN NO
ECN A001301



PERFORMANCE CHARACTERISTICS

- 1) BRAKE PRESSURE SETTING IS 2250±75 PSI [155 bar±5 bar] WITH 2500 PSI [172 bar] INLET PRESSURE AND 15 cSt OIL VISCOSITY.
- 2) MAXIMUM INLET PRESSURE IS 3000 PSI [207 bar].
- 3) OPERATING TEMPERATURE RANGE: -40 TO +225 °F [-40 TO -107 °C].

NOTES:

- 1) TO BE USED WITH MINERAL BASE HYDRAULIC OIL ONLY.
- 2) DIMENSIONS AND PERFORMANCE CHARACTERISTICS MAY VARY SLIGHTLY BETWEEN UNITS AND ARE TO BE USED FOR REFERENCE PURPOSES ONLY. MILLIMETER VALUES MAY NOT BE AN EXACT CONVERSION OF INCH VALUES.
- 3) VALVE SURFACE COATING: BLACK SEMI-GLOSS ENAMEL PAINT.
- 4) BASE IS DUCTILE IRON AND PAINTED WITH A SEMI-GLOSS BLACK ENAMEL PAINT.
- 5) WHEN THE VALVE IS ROTATED 180° THE P/N IS 03-460-449-R
- 6) PEDAL IS ALUMINUM.

SERVICE PARTS:

- 1) VALVE ASSEMBLY P/N 20-200-031.
- 2) VALVE ASSEMBLY REPAIR KIT P/N 06-400-150.

COMPONENT AND SYSTEM RECOMMENDATIONS MADE BY MICO, INC ARE BASED ON INFORMATION SUPPLIED BY POTENTIAL USER AND/OR SYSTEM DESIGNER. THE POTENTIAL USER AND/OR DESIGNER MUST MAKE FINAL ACCEPTANCE AND APPROVAL OF COMPONENTS AND SYSTEM AFTER TESTING PERFORMANCE ON AN ACTUAL APPLICATION FOR WHICH SYSTEM WAS DESIGNED.

MICO, INC CLAIMS PROPRIETARY RIGHTS TO THE MATERIAL DISCLOSED IN THIS DOCUMENT. THIS DOCUMENT IS PROVIDED IN CONFIDENCE AND MAY NOT BE REPRODUCED OR DISCLOSED WITHOUT WRITTEN PERMISSION FROM MICO, INC. COPYRIGHT MICO, INC. ALL RIGHTS RESERVED.

MICO
North Mankato, Minnesota USA

SCALE 0.500	TITLE REVERSE MODULATING VALVE		
DWN ETM 2013-09-06	APVD PROD ENGRG	SIZE B	DRAWING NUMBER 03-460-449
X NO X09-3201-001	APVD ENGRG JC 2013-09-06	B	REV B

CUSTOMER COPY