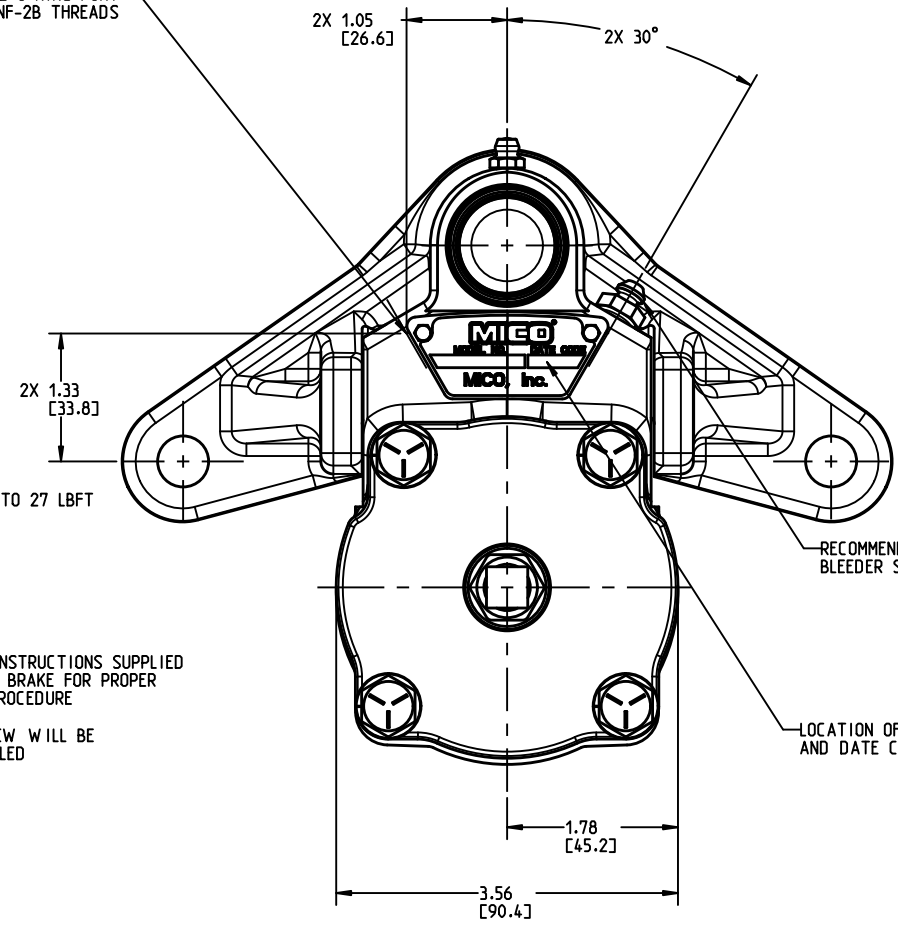
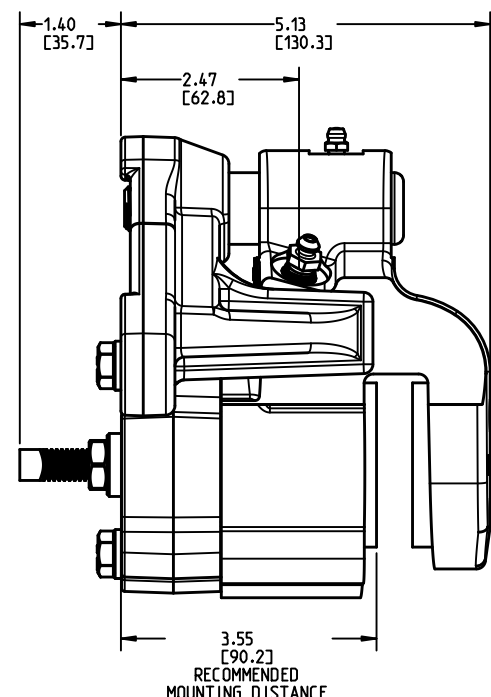


2X #4 SAE O-RING PORT
7/16-20UNF-2B THREADS



RECOMMENDED TORQUE FOR BLEEDER SCREW IS 9 TO 15 LBFT

7/16 NUT
RECOMMENDED TORQUE IS 22 TO 27 LBFT
SEE SERVICE INSTRUCTIONS SUPPLIED WITH CALIPER BRAKE FOR PROPER ADJUSTMENT PROCEDURE
NUT AND SET SCREW WILL BE SHIPPED UNASSEMBLED



OPTIONAL MOUNTING
SCALE 0.375

NOTES:

1. TO BE USED WITH MINERAL BASE HYDRAULIC OIL ONLY .
2. DIMENSIONS MAY VARY BETWEEN UNITS AND ARE TO BE USED FOR REFERENCE PURPOSES ONLY. MILLIMETER VALUES MAY NOT BE AN EXACT CONVERSION OF INCH VALUES.
3. SURFACE COATING: ZINC CHROMATE YELLOW.
4. SLOWLY APPLY GREASE THRU ZERK FITTING AFTER ASSEMBLY UNTIL GREASE IS OBSERVED EXITING SEALS. OVER PRESSURIZING MAY FORCE SEALS OUT OF HOUSING.
5. BRAKE SHOWN IN THE HYDRAULICALLY APPLIED POSITION.
6. LINING MATERIAL: NON-ASBESTOS, LEAD FREE
7. SEAL KIT P/N 02-500-058.
8. REPAIR KIT P/N 02-500-223.
9. LINING KIT P/N 20-060-113.
10. UNIT COMES WITH SAE 37° (JIC) #4 STRAIGHT O-RING ADAPTOR.

PERFORMANCE CHARACTERISTICS:

- 1) BRAKE TORQUE: Bt (LBIN) = 1920 X (DISC RADIUS - 1.18)
- 2) MAXIMUM TORQUE ACHIEVED ONLY AFTER BRAKE HAS BEEN PROPERLY ADJUSTED AND BURNISHED.
- 3) COMPLETE RETRACTION PRESSURE: 1,000 PSI.
- 4) MAXIMUM CONTINUOUS DUTY PRESSURE IS 2000 PSI
- 5) MAXIMUM INTERMITTENT DUTY PRESSURE IS 2500 PSI.
- 6) VOLUME REQUIRED FOR COMPLETE RETRACTION: .80 CU IN. MAXIMUM.
- 7) CAUTION: DISC RUBBING SPEED SHOULD NOT EXCEED 5,000 FT./MIN.
- 8) "A" DIMENSION = DISC RADIUS + .12

INCH
(MILLIMETER)



COMPONENT AND SYSTEM RECOMMENDATIONS MADE BY MICO, INC ARE BASED ON INFORMATION SUPPLIED BY POTENTIAL USER AND/OR SYSTEM DESIGNER. THE POTENTIAL USER AND/OR DESIGNER MUST MAKE FINAL ACCEPTANCE AND APPROVAL OF COMPONENTS AND SYSTEM AFTER TESTING PERFORMANCE ON AN ACTUAL APPLICATION FOR WHICH SYSTEM WAS DESIGNED.

MICO, INC CLAIMS PROPRIETARY RIGHTS TO THE MATERIAL DISCLOSED IN THIS DOCUMENT. THIS DOCUMENT IS PROVIDED IN CONFIDENCE AND MAY NOT BE REPRODUCED OR DISCLOSED WITHOUT WRITTEN PERMISSION FROM MICO, INC. COPYRIGHT MICO, INC. ALL RIGHTS RESERVED.

SCALE 0.500	TITLE SPRING BRAKE		
DWN JJC 2015-07-08	APVD PROD ENGRG	SIZE B	DRAWING NUMBER 03-530-306
X NO X5344-60	APVD ENGRG BSW 2015-07-10		REV G
			CUSTOMER COPY