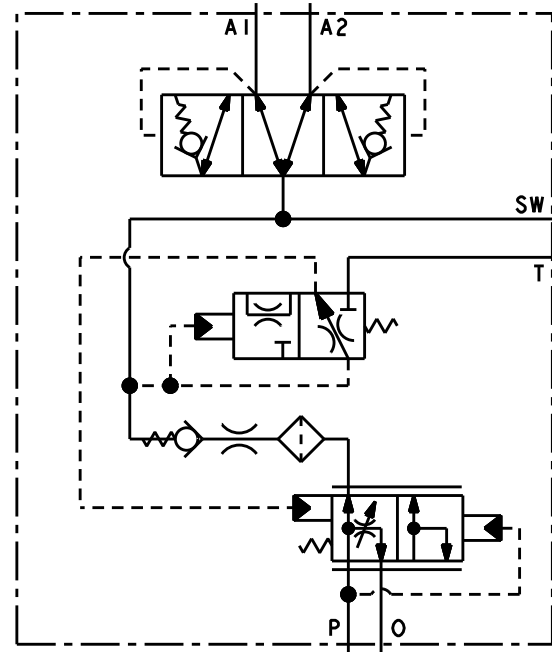


NOTES:

- 1) FOR USE WITH MINERAL BASE HYDRAULIC OIL ONLY.
- 2) DIMENSIONS MAY VARY BETWEEN UNITS AND ARE FOR REFERENCE PURPOSES ONLY. MILLIMETER VALUES MAY NOT BE AN EXACT CONVERSION OF INCH VALUES.
- 3) REPAIR KIT P/N 06-400-112.
- 4) VALVE SURFACE COATING: PAINT BLACK PER LINK-BELT STANDARD P00600005

PERFORMANCE CHARACTERISTICS:

- 1) SYSTEM RELIEF VALVE NOT INCLUDED. SYSTEM RELIEF VALVE MUST BE SET BETWEEN 3000-3100 PSI.
- 2) ACCUMULATOR CHARGING LIMITS ARE SET AT 2050-2150 PSI LOW LIMIT TO 2550-2650 PSI HIGH LIMIT.
- 3) RECOMMENDED SYSTEM FLOW 2 TO 30 GPM.
- 4) FLOW THRU PRESSURE DROP IS APPROXIMATELY 70 PSI AT 15 GPM WITH 14 CENTISTROKE OIL.
- 5) ACCUMULATOR CHARGE RATE IS .5-1.0 GPM WITH 14 CENTISTROKE OIL.
- 6) INTERNAL FILTRATION IS 54 MICRON OR BETTER.
- 7) EXTERNAL FILTRATION OF 10 MICRON OR BETTER IS REQUIRED.



INCH
[MILLIMETER]

MICO[®]

North Mankato, Minnesota USA

COMPONENT AND SYSTEM RECOMMENDATIONS MADE BY MICO, INC ARE BASED ON INFORMATION SUPPLIED BY POTENTIAL USER AND/OR SYSTEM DESIGNER. THE POTENTIAL USER AND/OR DESIGNER MUST MAKE FINAL ACCEPTANCE AND APPROVAL OF COMPONENTS AND SYSTEM AFTER TESTING PERFORMANCE ON AN ACTUAL APPLICATION FOR WHICH SYSTEM WAS DESIGNED.

MICO, INC CLAIMS PROPRIETARY RIGHTS TO THE MATERIAL DISCLOSED IN THIS DOCUMENT. THIS DOCUMENT IS PROVIDED IN CONFIDENCE AND MAY NOT BE REPRODUCED OR DISCLOSED WITHOUT WRITTEN PERMISSION FROM MICO, INC. COPYRIGHT MICO, INC. ALL RIGHTS RESERVED.

SCALE 0.625	TITLE ACV-DM011-145-179-3U			
DWN MAP 2012-02-28	APVD PROD ENGRG	SIZE B	DRAWING NUMBER 06-463-246	REV B
X NO 10-4240	APVD ENGRG PWB 2012-03-15		CUSTOMER COPY	0