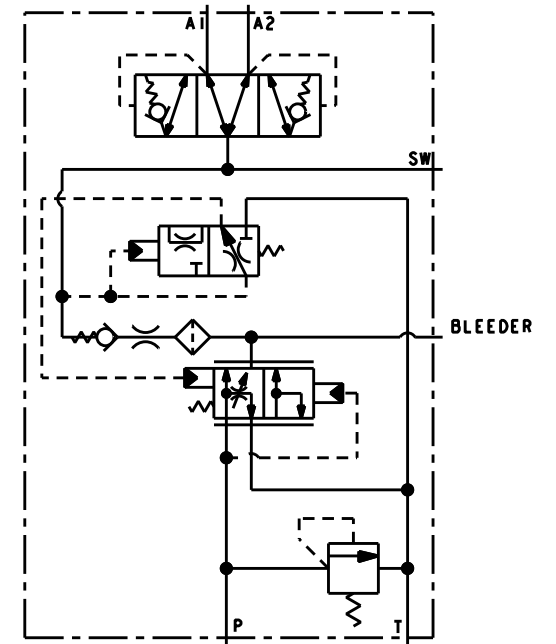


PART NUMBER	REVISION	DESCRIPTION	RELIEF VALVE SETTING (PSI)	ACCUMULATOR CHARGING LOW LIMIT (PSI)	ACCUMULATOR CHARGING HIGH LIMIT (PSI)	ACCUMULATOR CHARGE RATE (GPM)	REPAIR KIT P/N	RECOMMENDED SYSTEM FLOW (GPM)
06-463-414	E	ACV-DMF3-RV206-97-172-19	2985±50 AT 0.35 GPM	1400±50	2500±50	4.0 MIN.	06-400-216	2 TO 8
06-463-430	J	ACV-DMF3-RV213-138-193-19	3085±50 AT 0.35 GPM	2000±50	2800±50	5.0±1.0	06-400-217	2 TO 8



- NOTES:**
- FOR USE WITH MINERAL BASE HYDRAULIC OIL ONLY.
  - DIMENSIONS MAY VARY BETWEEN UNITS AND ARE FOR REFERENCE PURPOSES ONLY. MILLIMETER VALUES MAY NOT BE AN EXACT CONVERSION OF INCH VALUES
  - SEE CHART FOR REPAIR KIT P/N.
  - SURFACE COATING: OLIVE DRAB PRIMER PER DOD-P-15328 SPECIFICATION.

- PERFORMANCE CHARACTERISTICS:**
- FLOW THRU PRESSURE DROP IS APPROXIMATELY 70 PSI AT 15 GPM WITH 14 CENTISTOKE OIL.
  - INTERNAL FILTRATION IS 54 MICRON OR BETTER.
  - EXTERNAL FILTRATION OF 10 MICRON OR BETTER IS REQUIRED.

INCHES  
[MILLIMETERS]



COMPONENT AND SYSTEM RECOMMENDATIONS MADE BY MICO, INC ARE BASED ON INFORMATION SUPPLIED BY POTENTIAL USER AND/OR SYSTEM DESIGNER. THE POTENTIAL USER AND/OR DESIGNER MUST MAKE FINAL ACCEPTANCE AND APPROVAL OF COMPONENTS AND SYSTEM AFTER TESTING PERFORMANCE ON AN ACTUAL APPLICATION FOR WHICH SYSTEM WAS DESIGNED.		MICO, INC CLAIMS PROPRIETARY RIGHTS TO THE MATERIAL DISCLOSED IN THIS DOCUMENT. THIS DOCUMENT IS PROVIDED IN CONFIDENCE AND MAY NOT BE REPRODUCED OR DISCLOSED WITHOUT WRITTEN PERMISSION FROM MICO, INC. COPYRIGHT MICO, INC. ALL RIGHTS RESERVED.	
SCALE 0.500	TITLE ACV-DMF3-RV		
DWN MAP 2011-06-09	APVD PROD ENGRG DPD 2011-06-10	SIZE B	DRAWING NUMBER 06-463-405
X NO SEE CHART	APVD ENGRG PWB 2011-06-09	REV B CUSTOMER COPY	