

NOTES:

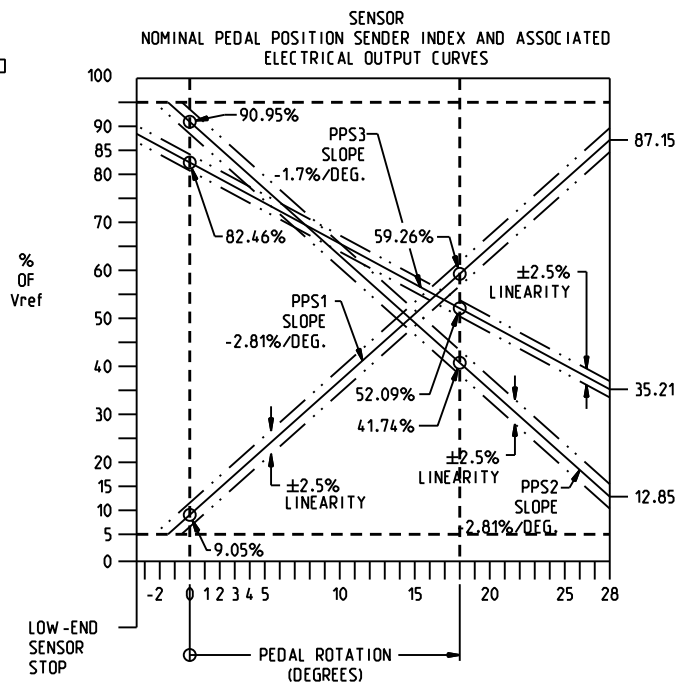
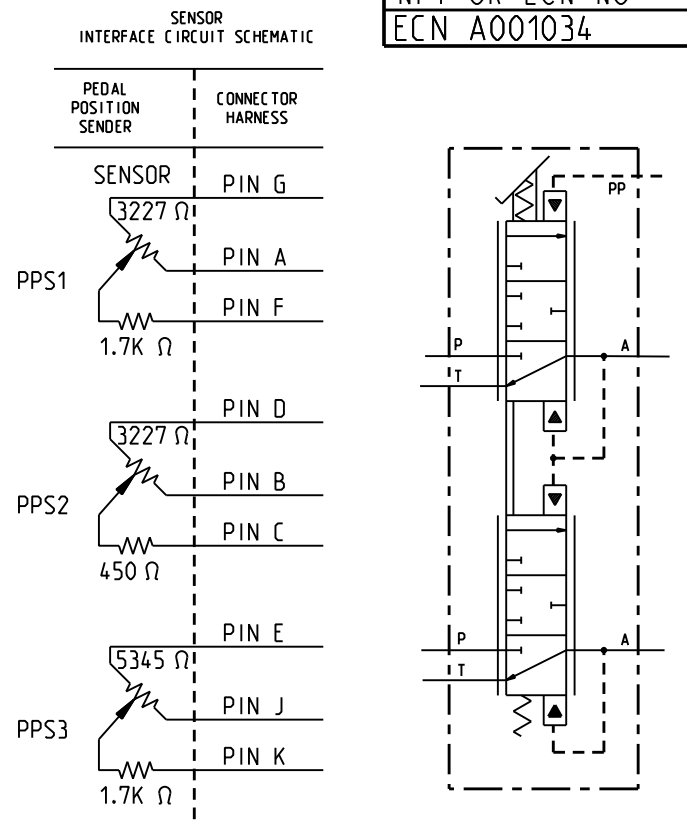
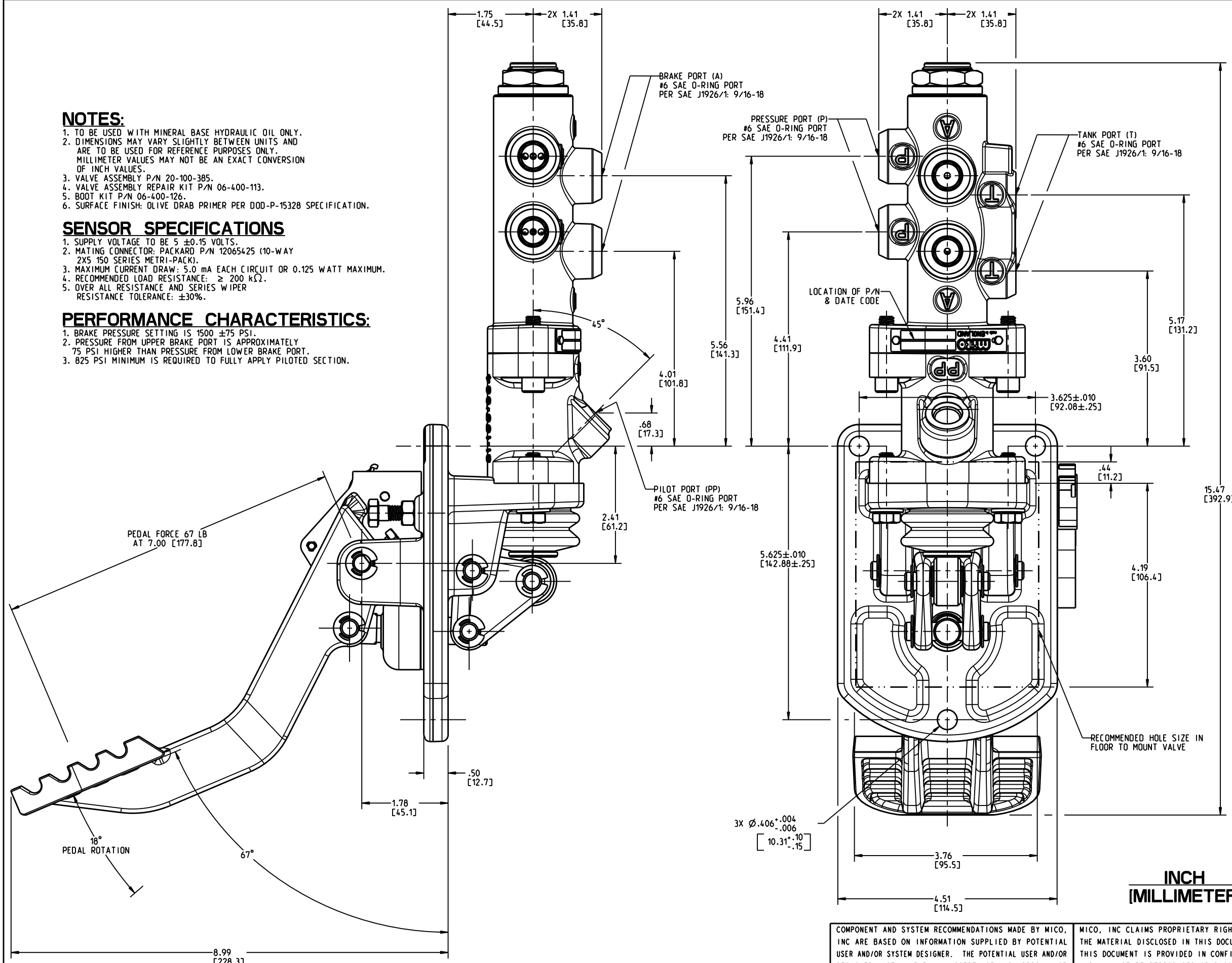
1. TO BE USED WITH MINERAL BASE HYDRAULIC OIL ONLY.
2. DIMENSIONS MAY VARY SLIGHTLY BETWEEN UNITS AND ARE TO BE USED FOR REFERENCE PURPOSES ONLY. MILLIMETER VALUES MAY NOT BE AN EXACT CONVERSION OF INCH VALUES.
3. VALVE ASSEMBLY P/N 20-100-385.
4. VALVE ASSEMBLY REPAIR KIT P/N 06-400-113.
5. BOOT KIT P/N 06-400-126.
6. SURFACE FINISH: OLIVE DRAB PRIMER PER DOD-P-15328 SPECIFICATION.

SENSOR SPECIFICATIONS

1. SUPPLY VOLTAGE TO BE 5 ± 0.15 VOLTS.
2. MATING CONNECTOR: PACKARD P/N 12065425 (10-WAY 2X5 150 SERIES METRI-PACK).
3. MAXIMUM CURRENT DRAW: 5.0 mA EACH CIRCUIT OR 0.125 WATT MAXIMUM.
4. RECOMMENDED LOAD RESISTANCE: $\geq 200 \text{ k}\Omega$.
5. OVER ALL RESISTANCE AND SERIES WIPER RESISTANCE TOLERANCE: $\pm 30\%$.

PERFORMANCE CHARACTERISTICS:

1. BRAKE PRESSURE SETTING IS 1500 ± 75 PSI.
2. PRESSURE FROM UPPER BRAKE PORT IS APPROXIMATELY 75 PSI HIGHER THAN PRESSURE FROM LOWER BRAKE PORT.
3. 825 PSI MINIMUM IS REQUIRED TO FULLY APPLY PILOTED SECTION.



INCH
[MILLIMETER]

MICO
North Mankato, Minnesota USA

COMPONENT AND SYSTEM RECOMMENDATIONS MADE BY MICO, INC ARE BASED ON INFORMATION SUPPLIED BY POTENTIAL USER AND/OR SYSTEM DESIGNER. THE POTENTIAL USER AND/OR DESIGNER MUST MAKE FINAL ACCEPTANCE AND APPROVAL OF COMPONENTS AND SYSTEM AFTER TESTING PERFORMANCE ON AN ACTUAL APPLICATION FOR WHICH SYSTEM WAS DESIGNED.		MICO, INC CLAIMS PROPRIETARY RIGHTS TO THE MATERIAL DISCLOSED IN THIS DOCUMENT. THIS DOCUMENT IS PROVIDED IN CONFIDENCE AND MAY NOT BE REPRODUCED OR DISCLOSED WITHOUT WRITTEN PERMISSION FROM MICO, INC. COPYRIGHT MICO, INC. ALL RIGHTS RESERVED.	
SCALE 0.500	TITLE PEDAL MODULATING VALVE WITH SENSOR		
DWN JRA 2009-12-28	APVD PROD ENGRG AB 30-DEC-2009	SIZE B	DRAWING NUMBER 06-464-958
X NO X7256	APVD ENGRG JC 2009-12-30		REV C