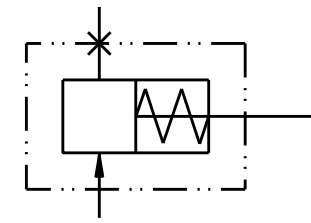


NOTES:

1. TO BE USED WITH DOT 3, 4 OR 5 BRAKE FLUID ONLY.
2. DIMENSIONS MAY VARY BETWEEN UNITS AND ARE TO BE USED FOR REFERENCE PURPOSES ONLY. MILLIMETER VALUES MAY NOT BE AN EXACT CONVERSION OF INCH VALUES.
3. MAXIMUM WORKING PRESSURE: 1500 PSI
4. STROKE: 2.063 IN
5. BORE: $\varnothing.625$ IN
6. AREA: .3068 SQIN
7. DISPLACEMENT: .633 CUIN
8. REPAIR KIT P/N 12-100-013
9. SURFACE FINISH: SULFRIC GOLD ANODIZE



INCH
[MILLIMETER]

mico North Mankato, Minnesota USA		SCALE	TITLE		
		1.000	SLAVE CYLINDER		
DWN MAP	APVD PROD ENGRG	SIZE	DRAWING NUMBER	REV	
2010-05-03	PJS 2010-05-18	B	12-120-015	J	
X NO	APVD ENGRG		CUSTOMER COPY	2	2
.	BSW 2010-05-14				

COMPONENT AND SYSTEM RECOMMENDATIONS MADE BY MICO, INC ARE BASED ON INFORMATION SUPPLIED BY POTENTIAL USER AND/OR SYSTEM DESIGNER. THE POTENTIAL USER AND/OR DESIGNER MUST MAKE FINAL ACCEPTANCE AND APPROVAL OF COMPONENTS AND SYSTEM AFTER TESTING PERFORMANCE ON AN ACTUAL APPLICATION FOR WHICH SYSTEM WAS DESIGNED.

MICO, INC CLAIMS PROPRIETARY RIGHTS TO THE MATERIAL DISCLOSED IN THIS DOCUMENT. THIS DOCUMENT IS PROVIDED IN CONFIDENCE AND MAY NOT BE REPRODUCED OR DISCLOSED WITHOUT WRITTEN PERMISSION FROM MICO, INC. COPYRIGHT MICO, INC. ALL RIGHTS RESERVED.