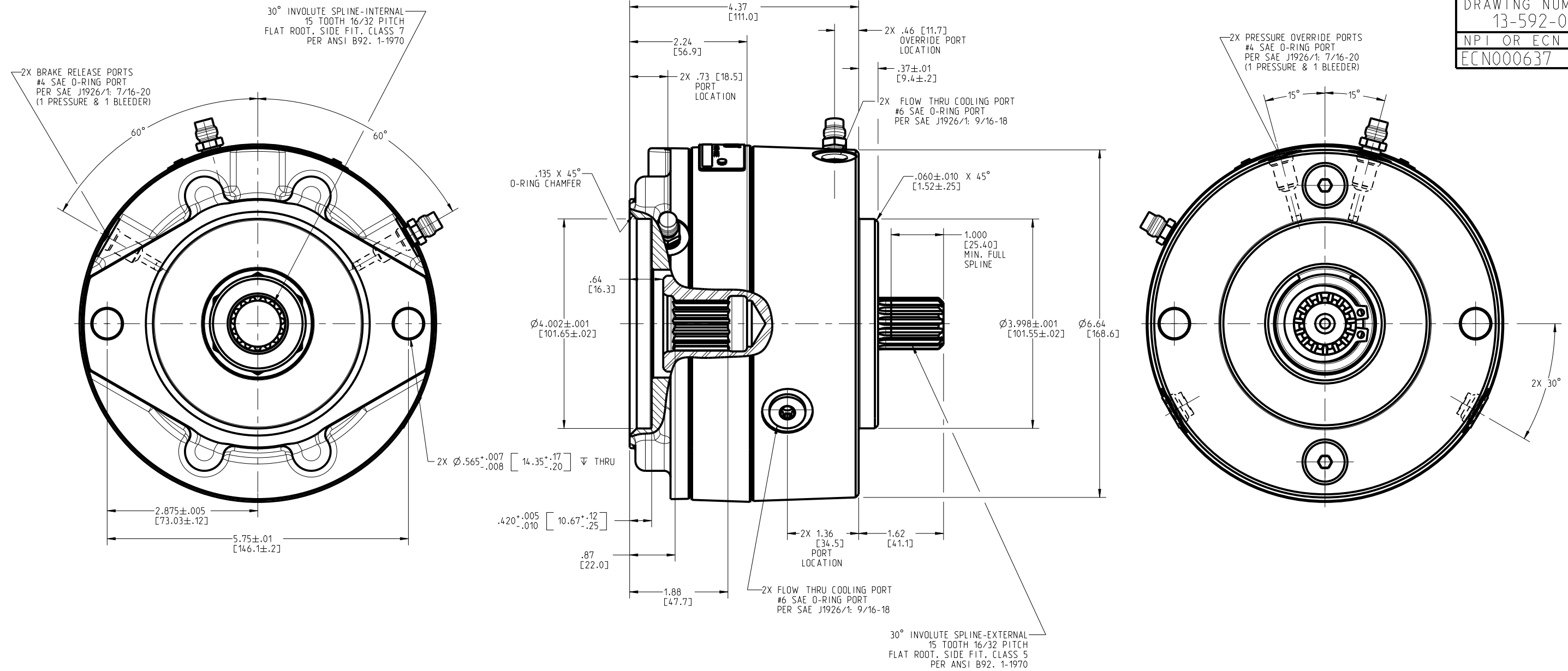


DRAWING NUMBER
13-592-050
NPI OR ECN NO
ECN000637



NOTES:

- 1) FOR USE WITH MINERAL BASE HYDRAULIC OIL ONLY.
- 2) DIMENSIONS WITHOUT TOLERANCE MAY VARY SLIGHTLY AND ARE FOR REFERENCE PURPOSES ONLY. MILLIMETER VALUES MAY NOT BE AN EXACT CONVERSION OF INCH VALUES.
- 3) LINING REPAIR KIT P/N 12-501-343
- 4) BEARING REPAIR KIT P/N 12-501-535
- 5) O-RING REPAIR KIT P/N 12-501-536
- 6) SPRING REPAIR KIT P/N 12-501-341
- 7) RECOMMEND USING GRADE 8 BOLTS AND APPROPRIATE WASHERS FOR INSTALLATION. TO PREVENT BINDING, RUN THE BOLTS IN ALTERNATELY UNTIL SNUG. TORQUE GRADE 8 BOLTS TO 80-90 LBFT. USE SUITABLE LOCTITE ON THE BOLT THREADS.

SPECIFICATIONS:

TYPE:	WET MULTIPLE DISC BRAKE, SPRING APPLY, HYDRAULIC RELEASE (WITH PRESSURE OVERRIDE)
FAILSAFE SECTION:	
TORQUE RATING:	WET 3,500 LBIN STATIC (BREAKAWAY) AT 0 PSI BACK PRESSURE DRY 5,200 LBIN DRY TORQUE FOR BRAKE RATING AND SPECIFICATIONS ONLY. ACTUAL TORQUE MAY VARY BY UP TO 10% DUE TO MANUFACTURING TOLERANCES
RELEASE PRESSURE:	265 PSI INITIAL, 350 PSI FULL
SERVICE OVERRIDE SECTION:	
TORQUE RATING:	3,400 PSI LB-IN (WET) @ 1,000 PSI
MAXIMUM INPUT PRESSURE:	1,000 PSI
MAXIMUM SPEED:	4,000 RPM, HOWEVER, MAXIMUM SPEED AT TIME OF SERVICE APPLY IS DEPENDENT ON PRODUCT APPLICATION.
LINING MATERIAL:	SINTERED BRONZE
APPROXIMATE WEIGHT:	32 LB

NOTE:
BRAKE MOUNTS TO MOTOR USING GRADE 8 BOLTS.
BRAKE TO BE MOUNTED USING ALL AVAILABLE MOUNTING HOLES.

COOLING OIL RECOMMENDATIONS:

OIL TYPE: MINERAL BASE HYDRAULIC OIL SUCH AS MOBIL DTE 24, CITGO A/W 32 OR EQUIVALENT

FLOW THRU CAPACITY: 1.0 - 7.0 GPM

MAXIMUM CASE PRESSURE: 30 PSI

SUMP OIL VOLUME:
HORIZONTAL SHAFT: 3 FL. OZ.
VERTICAL SHAFT: CONTACT FACTORY

INCH
[MILLIMETER]



COMPONENT AND SYSTEM RECOMMENDATIONS MADE BY MICO, INC. ARE BASED ON INFORMATION SUPPLIED BY POTENTIAL USER AND/OR SYSTEM DESIGNER. THE POTENTIAL USER AND/OR DESIGNER MUST MAKE FINAL ACCEPTANCE AND APPROVAL OF COMPONENTS AND SYSTEM AFTER TESTING PERFORMANCE ON AN ACTUAL APPLICATION FOR WHICH SYSTEM WAS DESIGNED.		MICO, INC. CLAIMS PROPRIETARY RIGHTS TO THE MATERIAL DISCLOSED IN THIS DOCUMENT. THIS DOCUMENT IS PROVIDED IN CONFIDENCE AND MAY NOT BE REPRODUCED OR DISCLOSED WITHOUT WRITTEN PERMISSION FROM MICO, INC. COPYRIGHT MICO, INC. ALL RIGHTS RESERVED.	
SCALE 0.500	TITLE 3PB-151552-BZ MULTIPLE DISC BRAKE	SIZE B	DRAWING NUMBER 13-592-050
DWNSHYPD 2016-12-21	APVD PROD ENGRG MG 2017-03-07	REV 2	REV 2
X NO X08-2084-100	APVD ENGRG CL 2016-12-22	CUSTOMER COPY	