

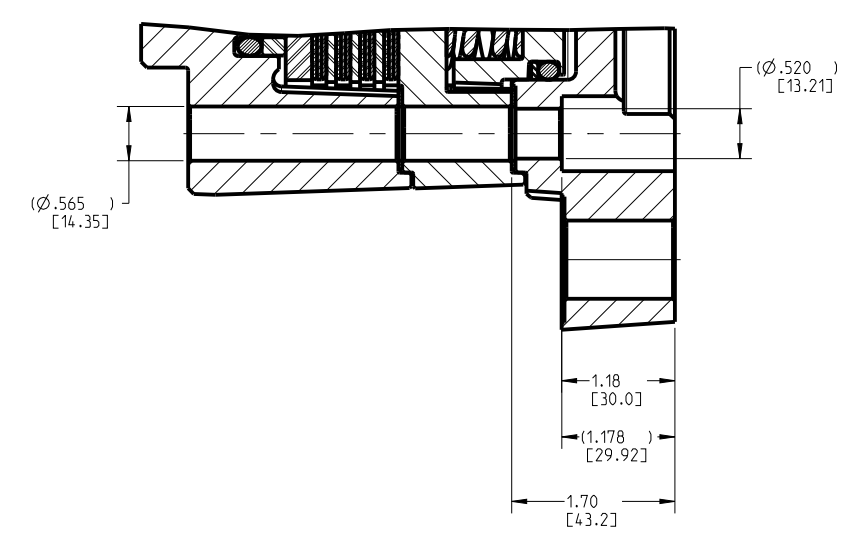
COOLING OIL RECOMMENDATIONS:

OIL TYPE: MINERAL BASE HYDRAULIC OIL SUCH AS MOBIL DTE 24, CITGO A/W 32 OR EQUIVALENT

FLOW THRU CAPACITY: 1.0 - 7.0 GPM

MAXIMUM CASE PRESSURE: 30 PSI

SUMP OIL VOLUME: HORIZONTAL SHAFT: 4 FL. OZ.
VERTICAL SHAFT: CONTACT FACTORY



SECTION C-C

INCH
(MILLIMETER)

- NOTES:**
- FOR USE WITH MINERAL BASE HYDRAULIC OIL ONLY.
 - DIMENSIONS MAY VARY BETWEEN UNITS AND ARE FOR REFERENCE PURPOSES ONLY. MILLIMETER VALUES MAY NOT BE AN EXACT CONVERSION OF INCH VALUES.
 - LINING REPAIR KIT P/N 12-501-321
 - BEARING REPAIR KIT P/N 12-501-322
 - O-RING REPAIR KIT P/N 12-501-323
 - SPRING REPAIR KIT P/N 12-501-476

SPECIFICATIONS:

TYPE: WET MULTIPLE DISC BRAKE, SPRING APPLY, HYDRAULIC RELEASE (WITH PRESSURE OVERRIDE)

FAILSAFE SECTION	10,400 LB-IN STATIC (BREAKAWAY) AT 0 PSI BACK PRESSURE
TORQUE RATING:	ACTUAL TORQUE MAY VARY BY UP TO 10% DUE TO MANUFACTURING TOLERANCES.
RELEASE PRESSURE:	390 PSI INITIAL, 510 PSI FULL, 3,000 PSI MAX. CONTINUOUS
SERVICE OVERRIDE SECTION	6,200 LB-IN AT 1,000 PSI
TORQUE RATING:	1,000 PSI
MAXIMUM INPUT PRESSURE:	
MAXIMUM SPEED:	4,000 RPM, HOWEVER, MAXIMUM SPEED AT TIME OF SERVICE APPLY IS DEPENDENT ON PRODUCT APPLICATION.
LINING MATERIAL:	METALLIC GRAPHITIC
APPROXIMATE WEIGHT:	44 LB



COMPONENT AND SYSTEM RECOMMENDATIONS MADE BY MICO, INC ARE BASED ON INFORMATION SUPPLIED BY POTENTIAL USER AND/OR SYSTEM DESIGNER. THE POTENTIAL USER AND/OR DESIGNER MUST MAKE FINAL ACCEPTANCE AND APPROVAL OF COMPONENTS AND SYSTEM AFTER TESTING PERFORMANCE ON AN ACTUAL APPLICATION FOR WHICH SYSTEM WAS DESIGNED.	MICO, INC CLAIMS PROPRIETARY RIGHTS TO THE MATERIAL DISCLOSED IN THIS DOCUMENT. THIS DOCUMENT IS PROVIDED IN CONFIDENCE AND MAY NOT BE REPRODUCED OR DISCLOSED WITHOUT WRITTEN PERMISSION FROM MICO, INC. COPYRIGHT MICO, INC. ALL RIGHTS RESERVED.	SCALE 0.500	TITLE 3PC-001315-DZ PRESSURE OVERRIDE BRAKE	SIZE C	DRAWING NUMBER 13-597-062	REV 2
DWNSHYPO 2015-12-17	APVD ENGRG PJS 2016-02-26	X NO X06-1207	RV 2016-01-27	CUSTOMER COPY		