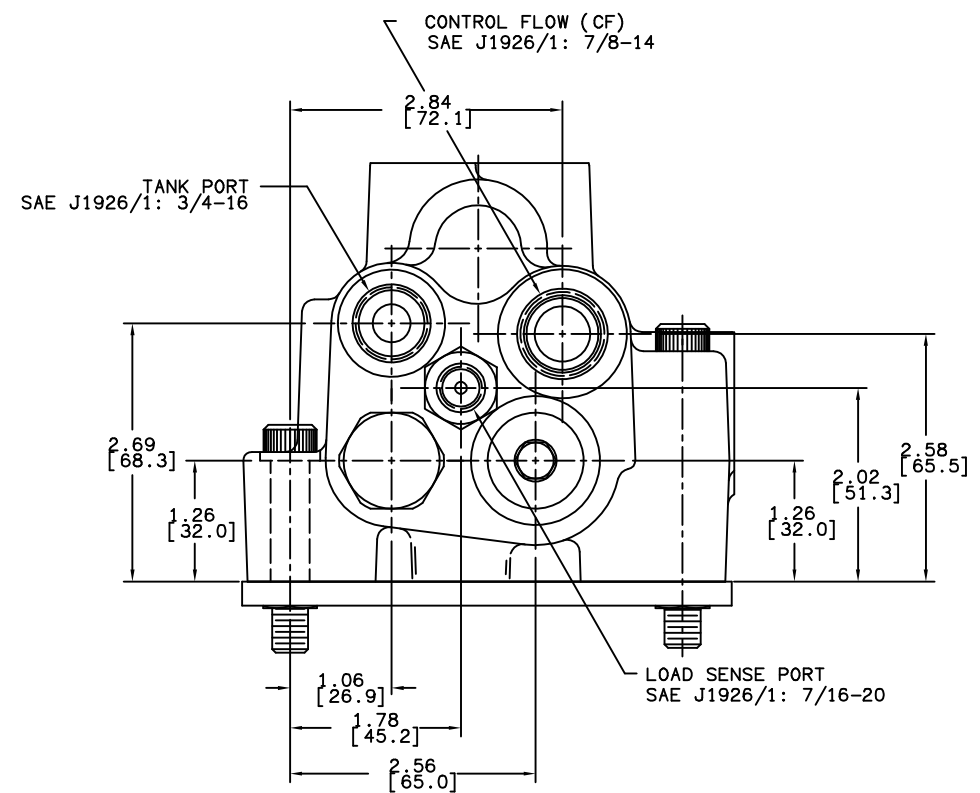
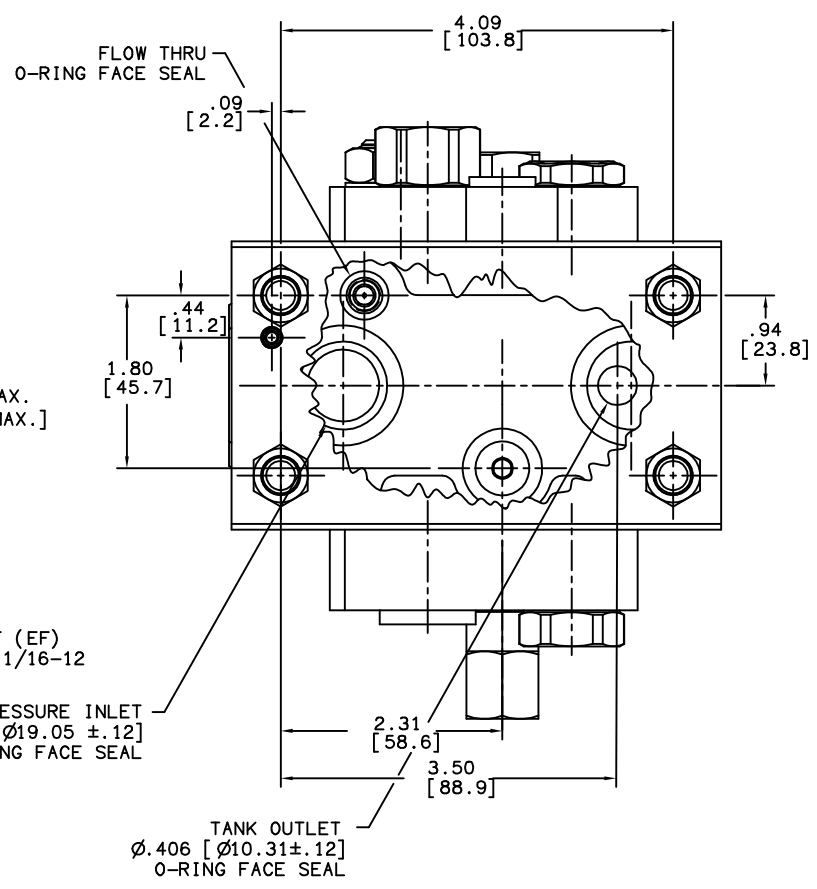
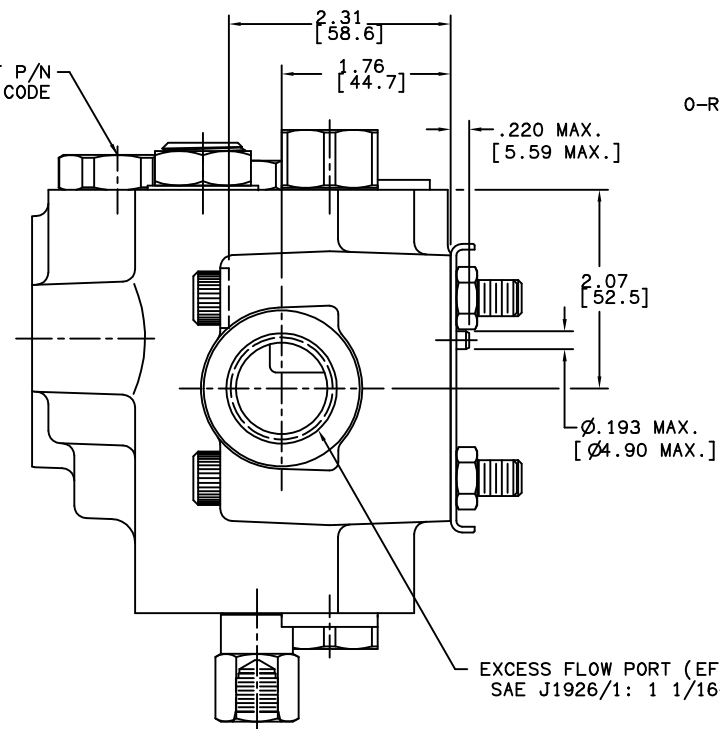
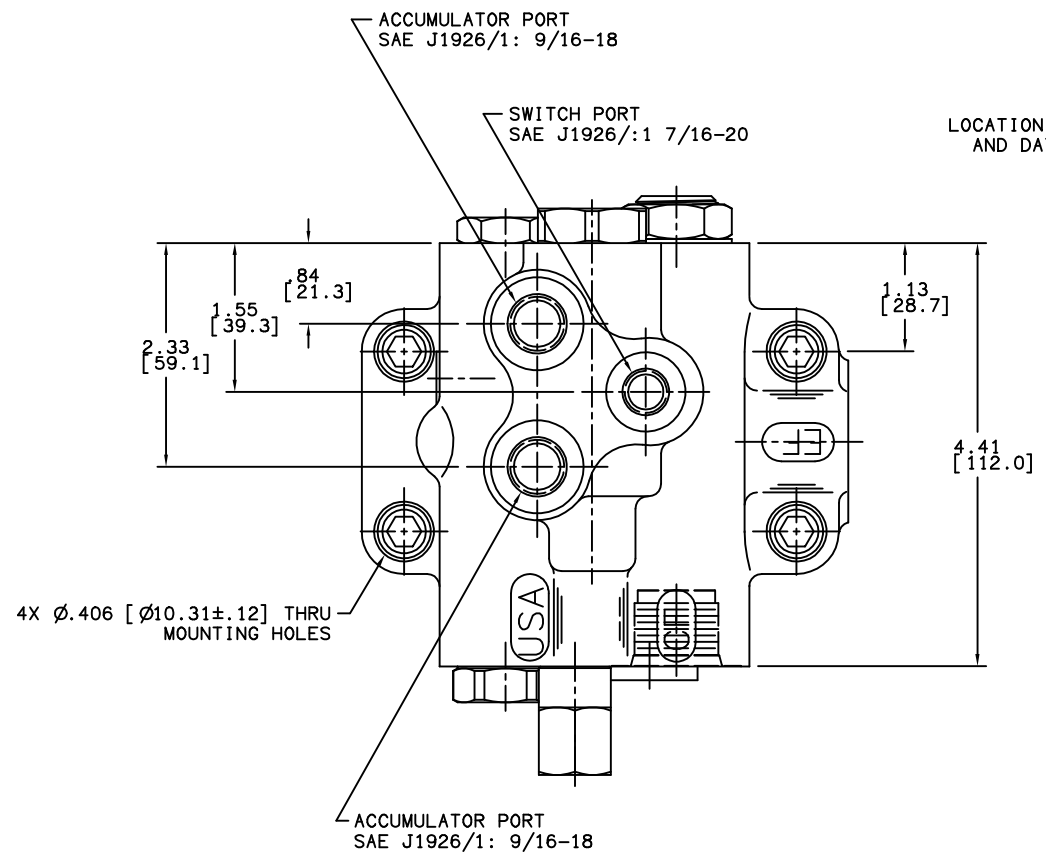


PART NUMBER
20-100-640
NPI OR ECN NO.
ECN E000588



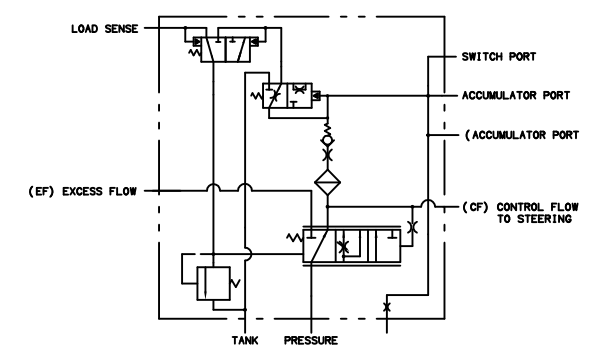
NOTES:

- 1) FOR USE WITH MINERAL BASE HYDRAULIC OIL ONLY.
- 2) DIMENSIONS MAY VARY SLIGHTLY BETWEEN UNITS AND ARE TO BE USED FOR REFERENCE PURPOSES ONLY.
- 3) REPAIR KIT P/N 06-400-177.

PERFORMANCE CHARACTERISTICS:

- 1) ACCUMULATOR CHARGING LIMITS ARE SET AT 1925 \pm 50 PSI LOW LIMIT AND 2800 \pm 50 PSI HIGH LIMIT
- 2) PRIORITY RELIEF VALVE SET TO 3000 \pm 50 PSI.
- 3) STANDBY PRESSURE IS APPROXIMATELY 160 PSI AT 5 GPM FLOW.
- 4) ACCUMULATOR CHARGE RATE IS APPROXIMATELY 0.8 +.4/- .3 GPM @ 1000 PSI.
- 5) INTERNAL FILTRATION IS 54 MICRON OR BETTER TO THE ACCUMULATORS.

INCH
[MILLIMETER]



TITLE PRIORITY/CHARGE VALVE (STATIC SIGNAL)

COMPONENT AND SYSTEM RECOMMENDATIONS MADE BY MICO, INC. ARE BASED ON INFORMATION SUPPLIED BY POTENTIAL USER AND/OR SYSTEM DESIGNER. THE POTENTIAL USER AND/OR DESIGNER MUST MAKE FINAL ACCEPTANCE AND APPROVAL OF COMPONENTS AND SYSTEM AFTER TESTING PERFORMANCE ON AN ACTUAL APPLICATION FOR WHICH SYSTEM WAS DESIGNED.	MICO, INC. CLAIMS PROPRIETARY RIGHTS TO THE MATERIAL DISCLOSED IN THIS DOCUMENT. THIS DOCUMENT IS PROVIDED IN CONFIDENCE AND MAY NOT BE REPRODUCED OR DISCLOSED WITHOUT WRITTEN PERMISSION FROM MICO, INC. COPYRIGHT MICO, INC. ALL RIGHTS RESERVED.	SCALE 1/2	CHECKED DPD 2016-02-24	PART NUMBER 20-100-640	REV F
		DRN JJH 2016-02-17	APP ENG PWB 2016-02-23	CUSTOMER COPY	