

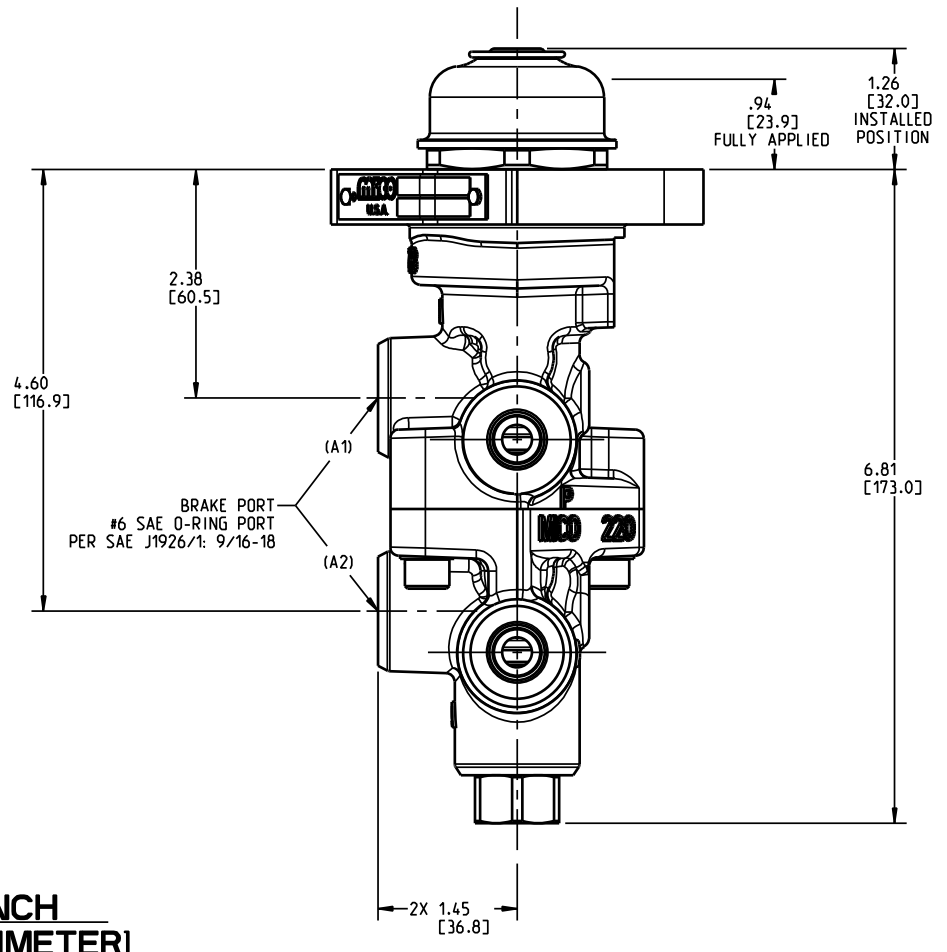
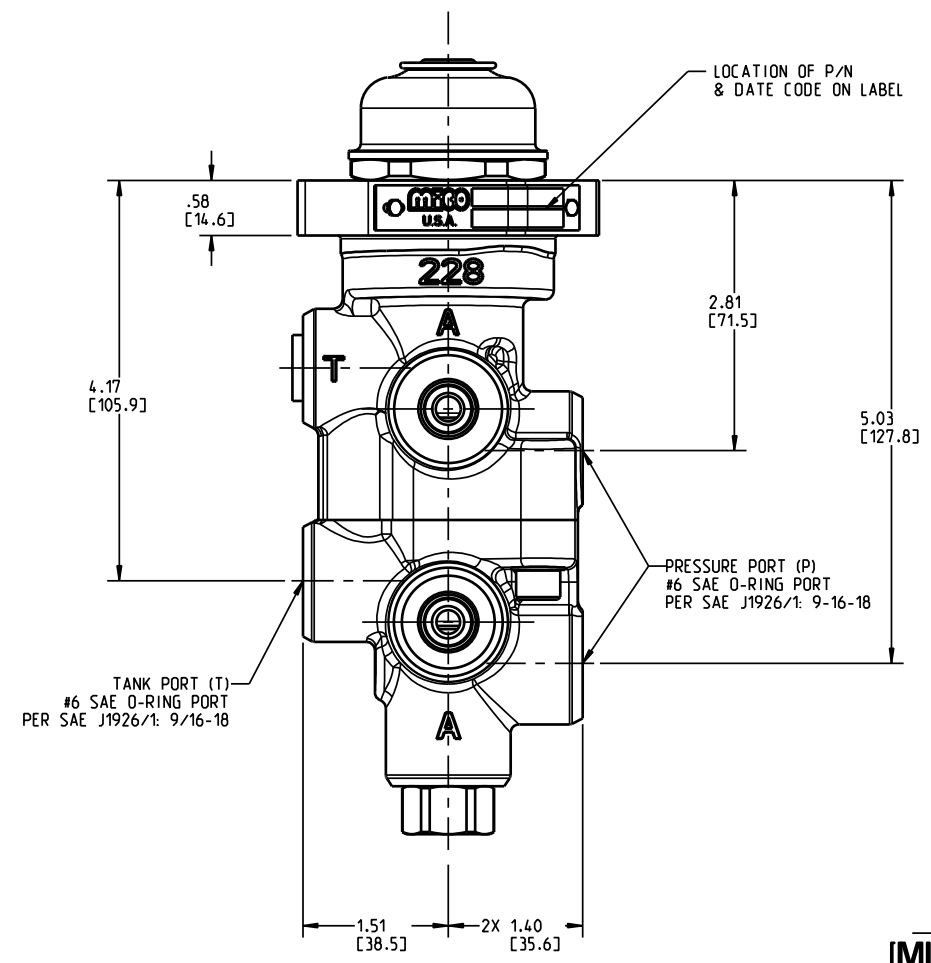
SUGGESTED MOUNTING HOLE
NOT TO SCALE

NOTES:

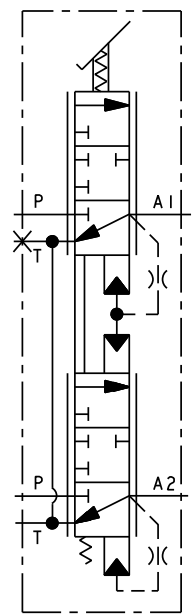
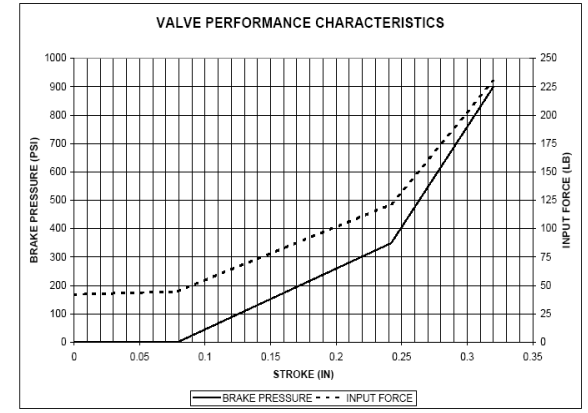
1. FOR USE WITH MINERAL BASED HYDRAULIC OIL ONLY.
2. DIMENSIONS MAY VARY SLIGHTLY BETWEEN UNITS AND ARE FOR REFERENCE PURPOSES ONLY. MILLIMETER VALUES MAY NOT BE AN EXACT CONVERSION OF INCH VALUES.
3. WHEN INSTALLED, PLUNGER MUST NOT BE ADVANCED.
4. REPAIR KIT P/N 06-400-248.
5. FINISH: SEMI-GLOSS BLACK URETHANE ENAMEL PAINT.

PERFORMANCE CHARACTERISTICS:

1. BRAKE PRESSURE SETTING IS 900 ±50 PSI [62 ±3 bar] MEASURED AT BRAKE PORT (A1) WITH 1700 PSI [117 bar] AND 15 cSt OIL.
2. PRESSURE FROM BRAKE PORT (A1) IS APPROXIMATELY 30 PSI [2 bar] HIGHER THAN PRESSURE FROM BRAKE PORT (A2).
3. MAXIMUM INLET PRESSURE IS 3000 PSI [207 bar].



INCH
[MILLIMETER]



COMPONENT AND SYSTEM RECOMMENDATIONS MADE BY MICO, INC ARE BASED ON INFORMATION SUPPLIED BY POTENTIAL USER AND/OR SYSTEM DESIGNER. THE POTENTIAL USER AND/OR DESIGNER MUST MAKE FINAL ACCEPTANCE AND APPROVAL OF COMPONENTS AND SYSTEM AFTER TESTING PERFORMANCE ON AN ACTUAL APPLICATION FOR WHICH SYSTEM WAS DESIGNED.

MICO, INC CLAIMS PROPRIETARY RIGHTS TO THE MATERIAL DISCLOSED IN THIS DOCUMENT. THIS DOCUMENT IS PROVIDED IN CONFIDENCE AND MAY NOT BE REPRODUCED OR DISCLOSED WITHOUT WRITTEN PERMISSION FROM MICO, INC. COPYRIGHT MICO, INC. ALL RIGHTS RESERVED.

SCALE 0.500	TITLE VALVE ASSEMBLY	SIZE B	DRAWING NUMBER 20-100-916	REV B
DWN CL 2008-05-31	APVD PROD ENGRG AB 5-JUN-2008		CUSTOMER COPY	1
X NO X08-2065-000	APVD ENGRG BSW 2008-06-04			3