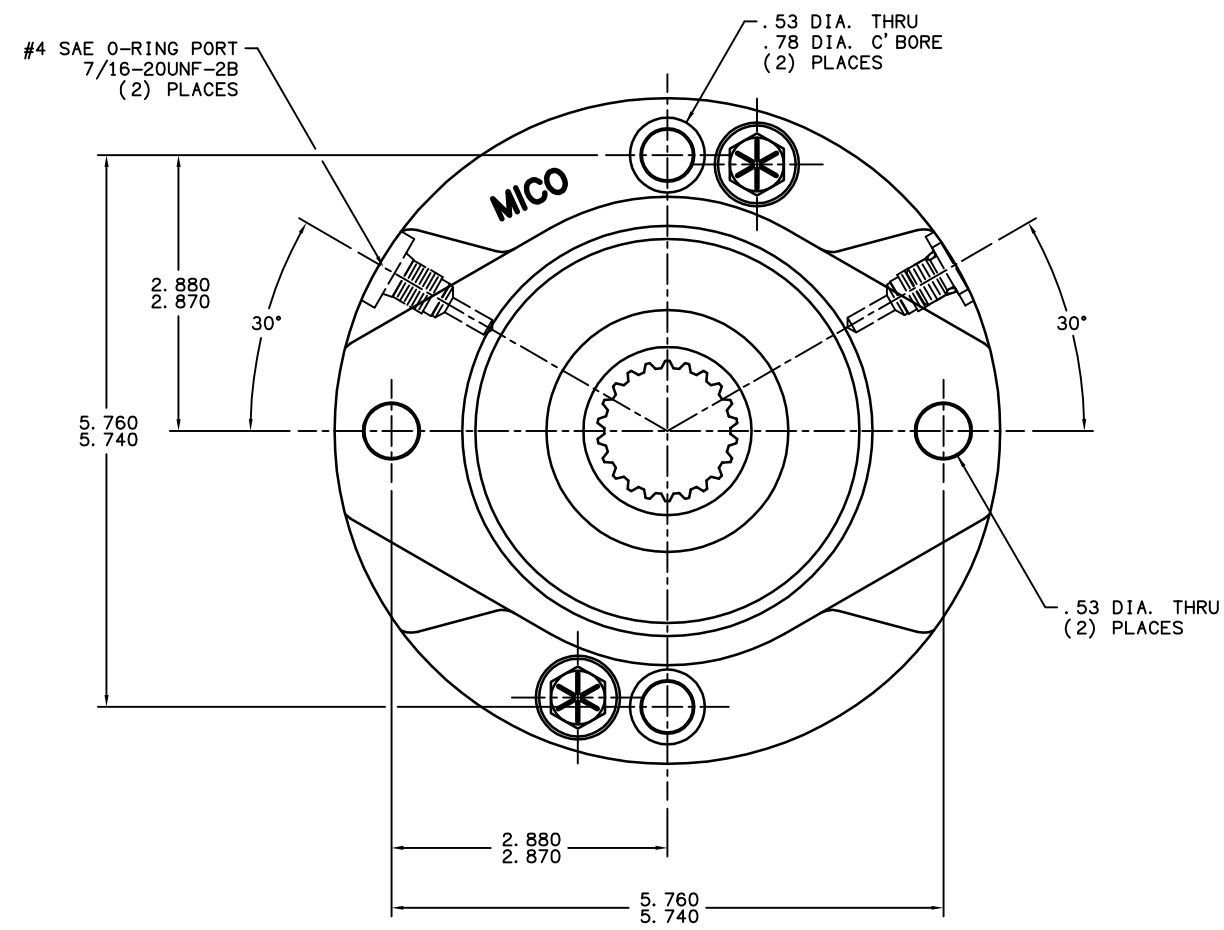
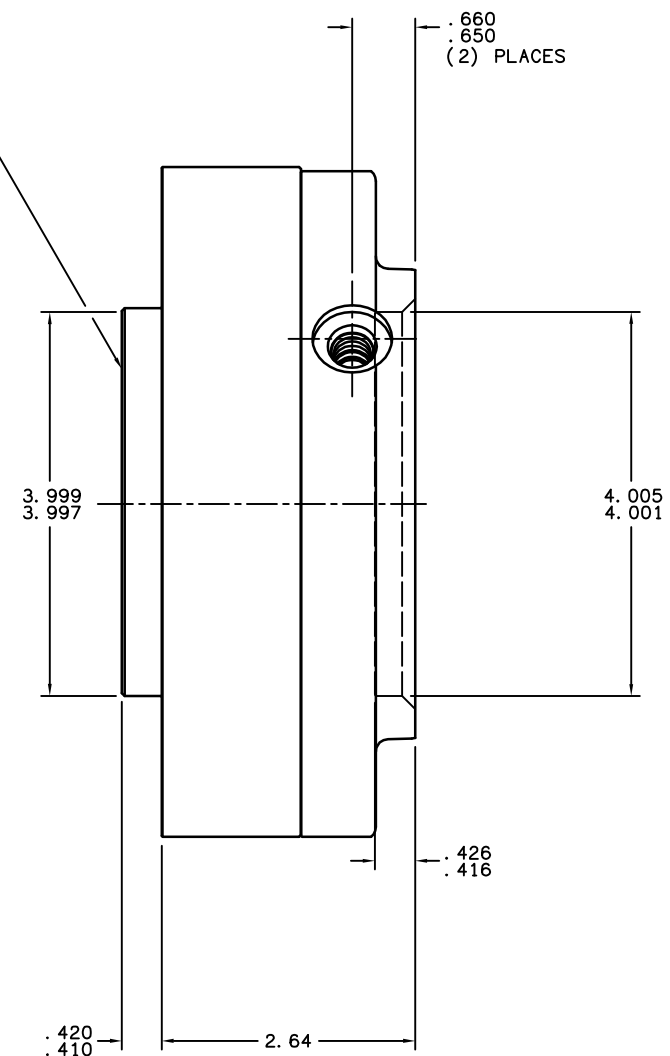
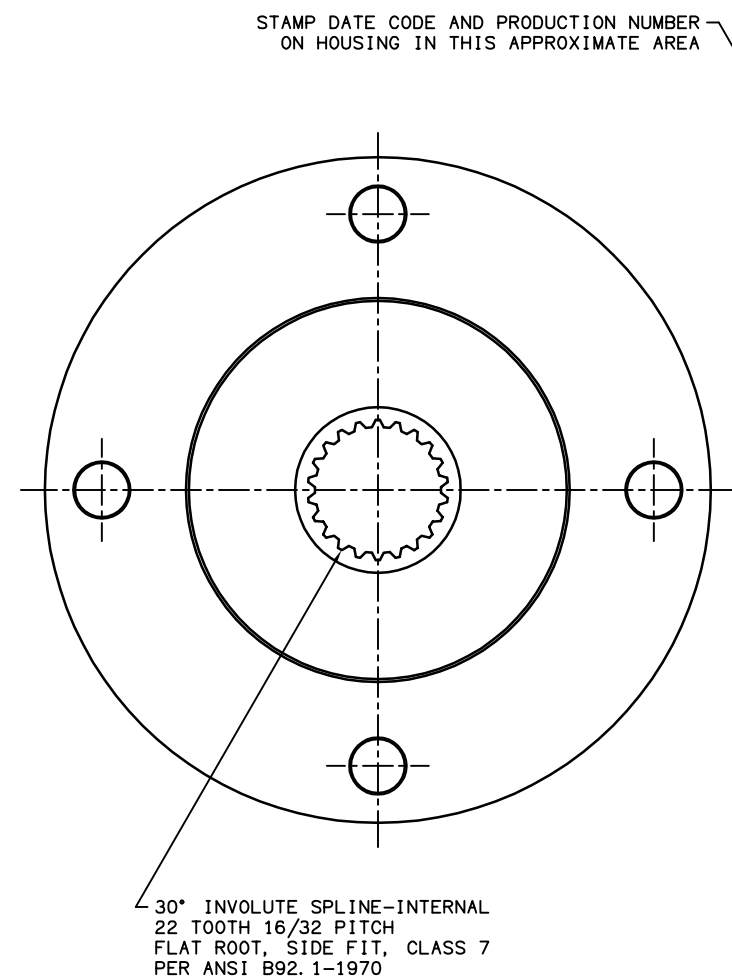


|                                  |                |                        |
|----------------------------------|----------------|------------------------|
| TITLE MULTIPLE DISC BRAKE MODULE |                | PART NUMBER 21-100-108 |
| REV.                             | NPR OR ECO NO. | DATE                   |
| D                                | ECO S-1324     | 03/17/99               |



**NOTES:**

- 1) LINING REPAIR KIT P/N 20-060-103
- 2) O-RING REPAIR KIT P/N 02-500-215
- 3) SPRING REPAIR KIT P/N 12-501-374

**SPECIFICATIONS:**

**TYPE:** WET MULTIPLE DISC BRAKE, SPRING APPLY, HYDRAULIC RELEASE

**MAXIMUM SPEED:** 4,000 RPM SHAFT SPEED CAPABILITY SPECIFIED IS FOR BRAKE IN RELEASED CONDITION. ENERGY ABSORPTION DURING APPLY CYCLE MUST BE CAREFULLY EXAMINED FOR EACH APPLICATION.

**RELEASE PRESSURE:** 105 PSI INITIAL, 120 PSI FULL, 3,000 PSI MAX.

**TORQUE RATING:** 1,200 LB-IN STATIC (BREAKAWAY)

**VOLUME OF OIL REQUIRED TO RELEASE BRAKE:** 0.5 IN.<sup>3</sup> MIN., 0.9 IN.<sup>3</sup> MAX.

**APPROXIMATE WEIGHT:** 19 LBS.

FOR USE WITH MINERAL BASE HYDRAULIC OIL ONLY.

**CAUTION!**

**IF HYDROSTATIC BENCH TESTING IS PERFORMED ON BRAKE ASSEMBLY, RELEASE PRESSURE SHOULD NOT EXCEED 400 P. S. I. UNLESS FOUR ADDITIONAL BOLTS (GRADE 5 OR BETTER) ARE USED FOR SUPPLEMENTAL CLAMPING.**

MICO, INC. CLAIMS PROPRIETARY RIGHTS TO THE MATERIAL DISCLOSED IN THIS DOCUMENT. THIS DOCUMENT IS PROVIDED IN CONFIDENCE AND MAY NOT BE REPRODUCED OR DISCLOSED WITHOUT WRITTEN PERMISSION FROM MICO, INC. COPYRIGHT MICO, INC. ALL RIGHTS RESERVED.

|               |                        |                                   |      |
|---------------|------------------------|-----------------------------------|------|
| <b>mico</b>   |                        | North Mankato, Minnesota U. S. A. |      |
| SCALE 1:2     | PART NUMBER 21-100-108 | REV. D                            |      |
| X NO.         | CUSTOMER COPY          |                                   |      |
| DRAWN ETM     |                        |                                   |      |
| REVISED G. J. |                        |                                   |      |
| DATE 03/17/99 | CHECKED                | APPROVED                          | ENG. |