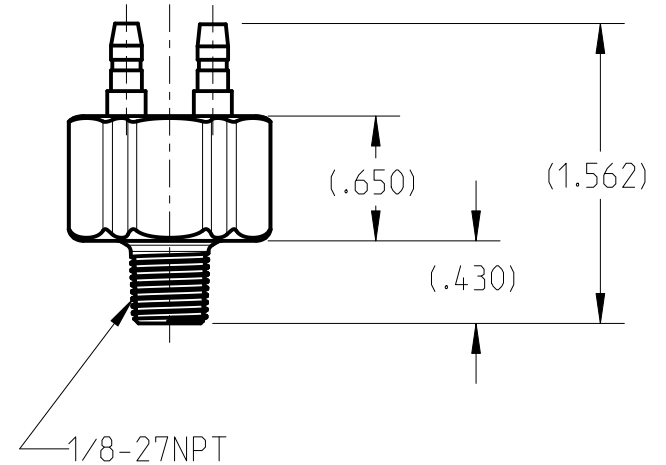
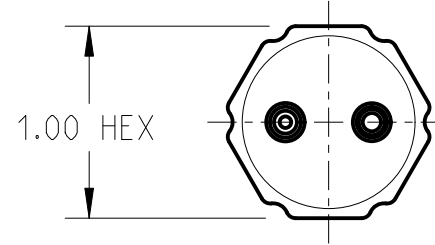


DRAWING NUMBER 32-580-115
NPI OR ECN NO
ECN C000609



## NOTES:

1. 6 VOLT - 20 AMP INDUCTIVE LOAD.
2. 12 VOLT - 10 AMP INDUCTIVE LOAD PROVIDED CONSTANT OR INCREASING PRESSURE IS APPLIED AFTER INITIAL CLOSING OF CONTACTS.
3. CONTACTS: SPST NORMALLY OPEN
4. CONTACTS CLOSE AT NOT LESS THAN 60 PSI OR MORE THAN 120 PSI RISING.
5. RESISTANCE TO GROUND NOT LESS THAN 50,000 OHMS.
6. HOUSING: STEEL-ZINC PLATED NO HEXAVALENT CHROMIUM.
7. 2500 PSI PROOF PRESSURE.
8. TERMINALS; MALE BULLET, ACCEPTS  $\varnothing$ .156 SNAP PLUG TERMINALS.
9. OPERATING TEMPERATURE:  $-20^{\circ}$  TO  $250^{\circ}$ F.



COMPONENT AND SYSTEM RECOMMENDATIONS MADE BY MICO, INC. ARE BASED ON INFORMATION SUPPLIED BY POTENTIAL USER AND/OR SYSTEM DESIGNER. THE POTENTIAL USER AND/OR DESIGNER MUST MAKE FINAL ACCEPTANCE AND APPROVAL OF COMPONENTS AND SYSTEM AFTER TESTING PERFORMANCE ON AN ACTUAL APPLICATION FOR WHICH SYSTEM WAS DESIGNED.

MICO, INC. CLAIMS PROPRIETARY RIGHTS TO THE MATERIAL DISCLOSED IN THIS DOCUMENT. THIS DOCUMENT IS PROVIDED IN CONFIDENCE AND MAY NOT BE REPRODUCED OR DISCLOSED WITHOUT WRITTEN PERMISSION FROM MICO, INC. COPYRIGHT MICO, INC. ALL RIGHTS RESERVED.

SCALE 1.000		TITLE SWITCH		
DWN JX 2016-08-11	APVD PROD ENGRG	SIZE A	DRAWING NUMBER 32-580-115	REV B
X NO X8072	APVD ENGRG SWK 2016-12-22		CUSTOMER COPY	2 1