



# Hydraulic Slave Cylinders and Wheel Cylinders

---

small bore, short stroke cylinders in various  
strokes, mountings, and fluid capacities



---

*Convert  
Hydraulic Pressure  
to Mechanical Force*



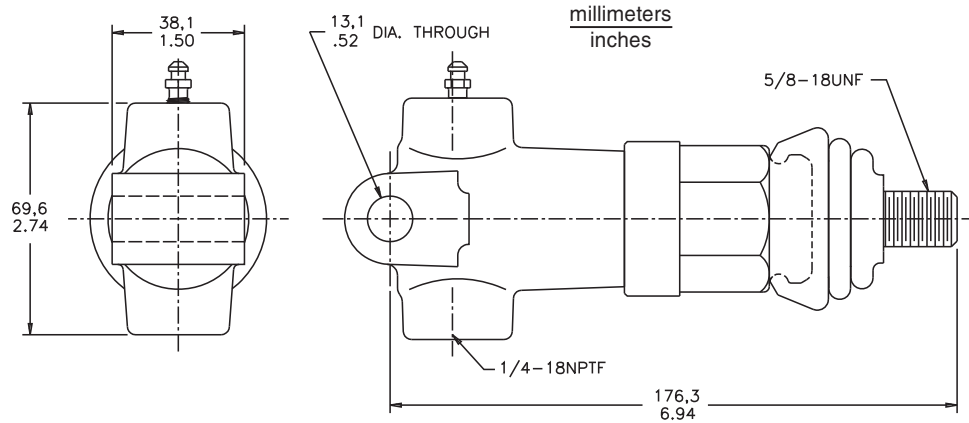
# Hydraulic Slave Cylinders and Wheel Cylinders

The hydraulic cylinders presented in this Product Guide are small bore, short stroke cylinders used for remote clutch and brake actuation. They are also used in industry for holding, clamping, latching and other applications.

The drawings in this guide show only general dimensions. If more detailed information is required on any of the model numbers, a customer print is available upon request.

MICO could not possibly know of and give advice with respect to all conceivable applications in which this product may be used and the possible hazards and/or results of each application. MICO has not undertaken any such wide evaluation. Therefore, anyone who uses an application which is not recommended by the manufacturer, first must completely satisfy himself that a danger will not be created by the application selected, or by the particular model of our product that is selected for the application.

# Slave Cylinder

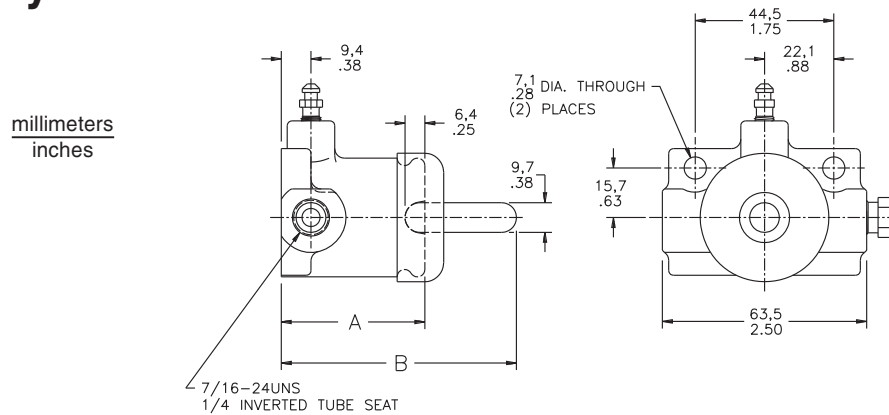


## SPECIFICATIONS

Model Number	Fluid Type	Bore Diameter	Effective Stroke	Fluid Volume Required for Full Stroke	Repair Kit Number
03-120-034	HO	25.4 mm (1.00 in)	44.5 mm (1.75 in)	22.5 cm <sup>3</sup> (1.37 in <sup>3</sup> )	02-100-035
03-120-039	BF	25.4 mm (1.00 in)	44.5 mm (1.75 in)	22.5 cm <sup>3</sup> (1.37 in <sup>3</sup> )	02-100-032
03-120-060	HO	25.4 mm (1.00 in)	44.5 mm (1.75 in)	22.5 cm <sup>3</sup> (1.37 in <sup>3</sup> )	02-100-035
03-120-061	BF	25.4 mm (1.00 in)	44.5 mm (1.75 in)	22.5 cm <sup>3</sup> (1.37 in <sup>3</sup> )	02-100-032

BF = DOT 3, 4, 5 and 5.1 brake fluid HO = mineral base hydraulic oil

# Slave Cylinder



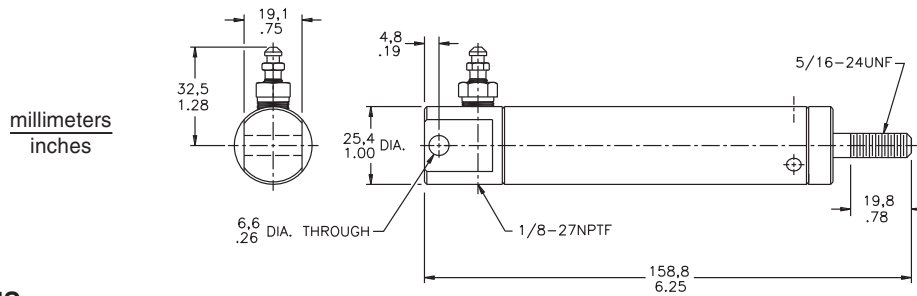
## SPECIFICATIONS

Model Number	Fluid Type	Bore Diameter	Effective Stroke	Fluid Volume Required for Full Stroke	Dimensions		Repair Kit Number
					A	B	
02-120-006	BF	25.4 mm (1.00 in)	12.7 mm (.50 in)	6.4 cm <sup>3</sup> (.39 in <sup>3</sup> )	46.0 mm (1.81 in)	75.4 mm (2.97 in)	02-100-005
02-120-016	BF	19.1 mm (.75 in)	25.4 mm (1.00 in)	7.2 cm <sup>3</sup> (.44 in <sup>3</sup> )	58.7 mm (2.31 in)	100.8 mm (3.97 in)	02-100-001
* 02-120-017	BF	19.1 mm (.75 in)	25.4 mm (1.00 in)	7.2 cm <sup>3</sup> (.44 in <sup>3</sup> )	58.7 mm (2.31 in)	NA	02-100-001
02-120-020	HO	25.4 mm (1.00 in)	25.4 mm (1.00 in)	12.9 cm <sup>3</sup> (.79 in <sup>3</sup> )	58.7 mm (2.31 in)	100.8 mm (3.97 in)	02-100-029
02-120-021	BF	25.4 mm (1.00 in)	25.4 mm (1.00 in)	12.9 cm <sup>3</sup> (.79 in <sup>3</sup> )	58.7 mm (2.31 in)	100.8 mm (3.97 in)	02-100-007
02-120-026	BF	25.4 mm (1.00 in)	12.7 mm (.75 in)	9.6 cm <sup>3</sup> (.59 in <sup>3</sup> )	52.3 mm (2.06 in)	88.1 mm (3.47 in)	02-100-007
02-120-028	HO	25.4 mm (1.00 in)	12.7 mm (.75 in)	9.6 cm <sup>3</sup> (.59 in <sup>3</sup> )	52.3 mm (2.06 in)	88.1 mm (3.47 in)	02-100-029
02-120-071	BF	26.9 mm (1.06 in)	25.4 mm (1.00 in)	14.5 cm <sup>3</sup> (.89 in <sup>3</sup> )	58.7 mm (2.31 in)	100.8 mm (3.97 in)	02-100-016
* 02-120-117	BF	25.4 mm (1.00 in)	25.4 mm (1.00 in)	12.9 cm <sup>3</sup> (.79 in <sup>3</sup> )	58.7 mm (2.31 in)	NA	02-100-007
03-120-010	HO	19.1 mm (.75 in)	12.7 mm (.50 in)	3.6 cm <sup>3</sup> (.22 in <sup>3</sup> )	46.0 mm (1.81 in)	75.4 mm (2.97 in)	02-100-028
03-120-017	BF	25.4 mm (1.00 in)	25.4 mm (1.00 in)	12.9 cm <sup>3</sup> (.79 in <sup>3</sup> )	58.7 mm (2.31 in)	100.8 mm (3.97 in)	02-100-007
03-120-051	BF	15.7 mm (.62 in)	12.7 mm (.50 in)	2.5 cm <sup>3</sup> (.15 in <sup>3</sup> )	46.0 mm (1.81 in)	74.4 mm (2.93 in)	02-100-014

\* Push rod not included

BF = DOT 3, 4, 5 and 5.1 brake fluid HO = mineral base hydraulic oil

# Slave Cylinder



## SPECIFICATIONS

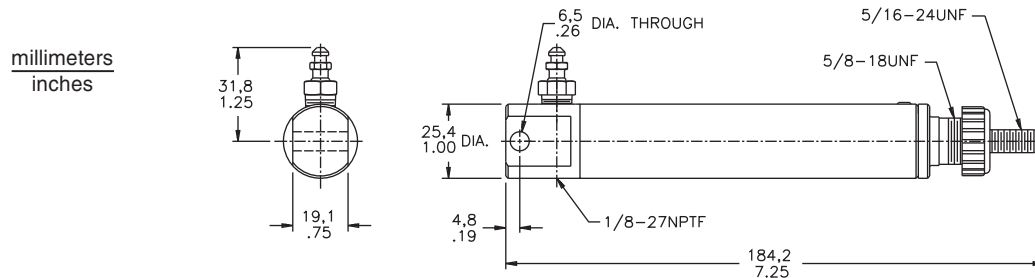
Model Number	Fluid Type	Bore Diameter	Effective Stroke	Fluid Volume Required for Full Stroke	Repair Kit Number
12-120-007	BF	15.7 mm (.62 in)	62.0 mm (2.44 in)	12.1 cm <sup>3</sup> (.74 in <sup>3</sup> )	12-100-009
12-120-010	HO	15.7 mm (.62 in)	62.0 mm (2.44 in)	12.1 cm <sup>3</sup> (.74 in <sup>3</sup> )	12-100-010
* 12-120-013	BF	15.7 mm (.62 in)	62.0 mm (2.44 in)	12.1 cm <sup>3</sup> (.74 in <sup>3</sup> )	12-100-011

\* Includes boot 42-570-009

BF = DOT 3, 4, 5 and 5.1 brake fluid HO = mineral base hydraulic oil

**NOTE: Maximum pressure - 103.4 bar (1500 PSI)**

# Slave Cylinder



## SPECIFICATIONS

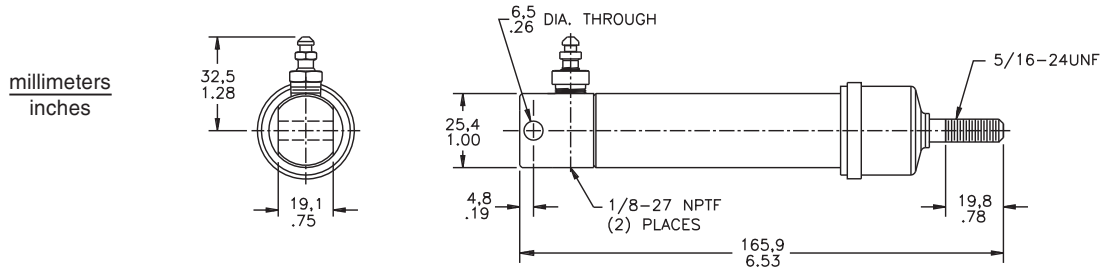
Model Number	Fluid Type	Bore Diameter	Effective Stroke	Fluid Volume Required for Full Stroke	Repair Kit Number
12-120-015	BF	15.7 mm (.62 in)	52.3 mm (2.06 in)	10.3 cm <sup>3</sup> (.63 in <sup>3</sup> )	12-100-009
12-120-016	HO	15.7 mm (.62 in)	52.3 mm (2.06 in)	10.3 cm <sup>3</sup> (.63 in <sup>3</sup> )	12-100-014
* 12-120-017	BF	15.7 mm (.62 in)	52.3 mm (2.06 in)	10.3 cm <sup>3</sup> (.63 in <sup>3</sup> )	12-100-013

\* No return spring

BF = DOT 3, 4, 5 and 5.1 brake fluid HO = mineral base hydraulic oil

**NOTE: Maximum pressure - 103.4 bar (1500 PSI)**

# Slave Cylinder



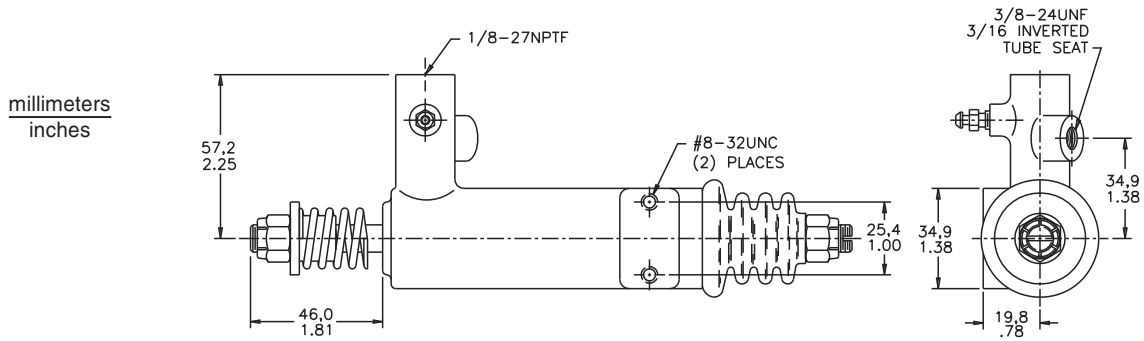
## SPECIFICATIONS

Model Number	Fluid Type	Bore Diameter	Effective Stroke	Fluid Volume Required for Full Stroke	Repair Kit Number
12-120-123	BF	15.7 mm (.62 in)	54.6 mm (2.15 in)	10.8 cm <sup>3</sup> (.66 in <sup>3</sup> )	12-100-020

BF = DOT 3, 4, 5 and 5.1 brake fluid HO = mineral base hydraulic oil

**NOTE: Maximum pressure - 103.4 bar (1500 PSI)**

# Slave Cylinder

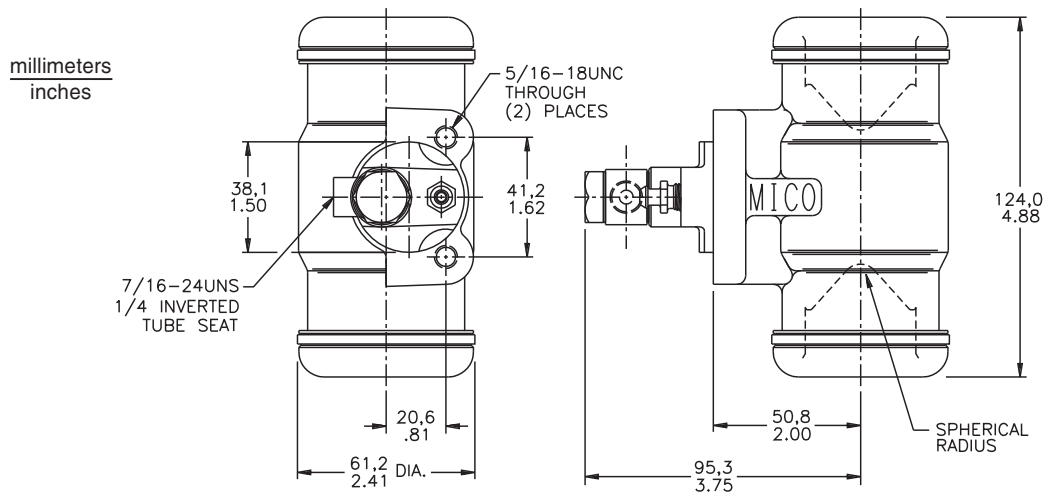


## SPECIFICATIONS

Model Number	Fluid Type	Bore Diameter	Effective Stroke	Fluid Volume Required for Full Stroke	Repair Kit Number
02-120-057	BF	25.4 mm (1.00 in)	9.7 mm (.38 in)	4.8 cm <sup>3</sup> (.29 in <sup>3</sup> )	02-100-012

BF = DOT 3, 4, 5 and 5.1 brake fluid HO = mineral base hydraulic oil

# Wheel Cylinder

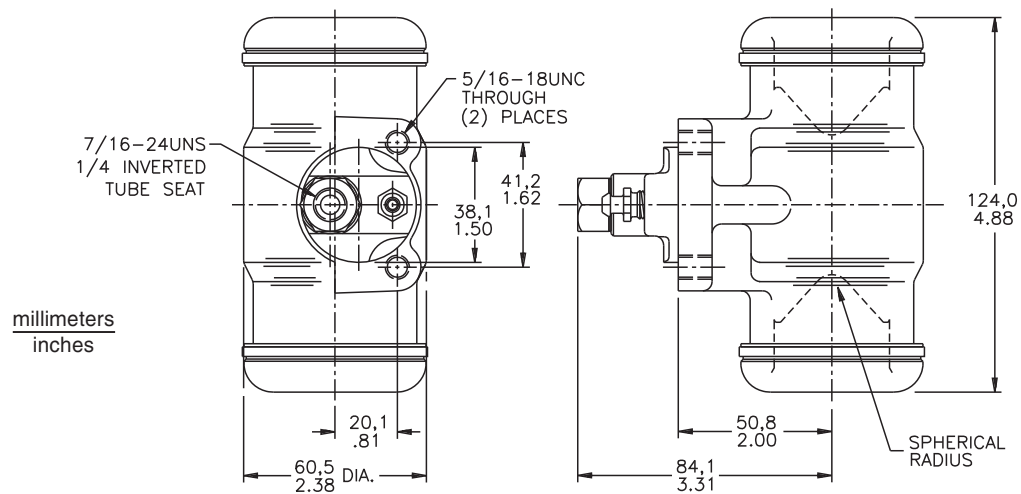


## SPECIFICATIONS

Model Number	Fluid Type	Bore Diameter	Effective Stroke Each Side	Effective Stroke Total	Spherical Radius	Repair Kit Number
12-140-011	BF	38.1 mm (1.50 in)	16.8 mm (.66 in)	33.5 mm (1.32 in)	6.4 mm (.25 in)	12-100-003
12-140-012	HO	44.5 mm (1.75 in)	10.4 mm (.41 in)	20.8 mm (.82 in)	7.9 mm (.31 in)	12-100-002
12-140-013	BF	44.5 mm (1.75 in)	10.4 mm (.41 in)	20.8 mm (.82 in)	7.9 mm (.31 in)	12-100-005
12-140-021	BF	35.1 mm (1.38 in)	16.8 mm (.66 in)	33.5 mm (1.32 in)	6.4 mm (.25 in)	12-100-006

BF = DOT 3, 4, 5 and 5.1 brake fluid HO = mineral base hydraulic oil

# Wheel Cylinder

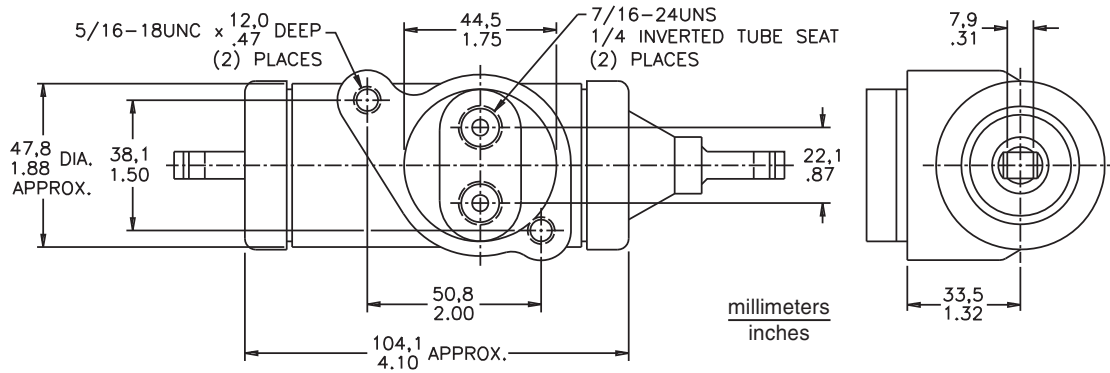


## SPECIFICATIONS

Model Number	Fluid Type	Bore Diameter	Effective Stroke Each Side	Effective Stroke Total	Spherical Radius	Repair Kit Number
04-140-015	BF	38.1 mm (1.50 in)	16.8 mm (.66 in)	33.5 mm (1.32 in)	6.4 mm (.25 in)	12-100-003
04-140-021	BF	44.5 mm (1.75 in)	10.4 mm (.41 in)	20.8 mm (.82 in)	7.9 mm (.31 in)	12-100-005

BF = DOT 3, 4, 5 and 5.1 brake fluid HO = mineral base hydraulic oil

# Wheel Cylinder

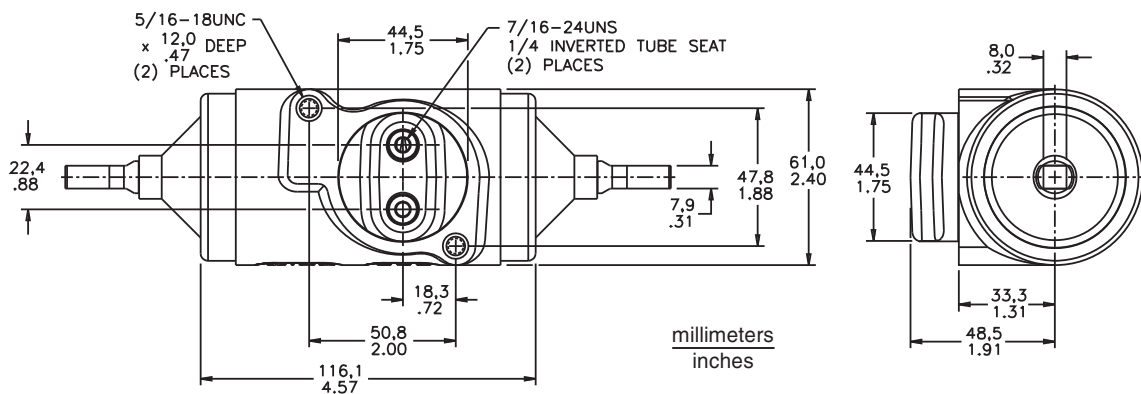


## SPECIFICATIONS

Model Number	Fluid Type	Bore Diameter	Repair Kit Number
04-120-031	BF	38.1 mm (1.50 in)	02-100-137

BF = DOT 3, 4, 5 and 5.1 brake fluid HO = mineral base hydraulic oil

# Wheel Cylinder



## SPECIFICATIONS

Model Number	Fluid Type	Bore Diameter	Repair Kit Number
03-140-011	BF	44.5 mm (1.75 in)	02-100-038
03-140-013	BF	38.1 mm (1.50 in)	02-100-051

BF = DOT 3, 4, 5 and 5.1 brake fluid HO = mineral base hydraulic oil

MICO has made every attempt to present accurate information in catalogs, brochures, and other printed material. MICO can accept no responsibility for errors from unintentional oversights that may exist. Due to a continuous program of product improvement, both materials and specifications are subject to change without notice or obligation. Refer to [www.mico.com](http://www.mico.com) for the most recent versions of our literature. If you have any further questions, please call MICO.



Innovative Braking and Controls Worldwide

**MICO, Incorporated**

1911 Lee Boulevard  
North Mankato, MN U.S.A. 56003-2507  
Tel: +1 507 625 6426 Fax: +1 507 625 3212

Web Site: [www.mico.com](http://www.mico.com)

**PRODUCT LINE:**

**Brakes**

Caliper Disc Brakes  
Multiple Disc Brakes

**Brake Locks**

Electric  
Mechanical

**Controls**

Electronic Controls  
Hydraulic Throttle Controls  
Pedal Controls  
Switches  
Transducers/Sensors

**Cylinders**

Drive Axle Brake Actuators  
Slave Cylinders  
Wheel Cylinders

**Master Cylinders**

Boosted Cylinders  
Hydraulically and Air Actuated  
Straight Bore Cylinders  
Two-Stage Cylinders

**Valves**

Accumulator Charging  
Electrohydraulic Brake  
Park Brake  
Pressure Modulating

**Miscellaneous Components**

In-line Residual Check Valves  
Pump with Integrated Valves  
Reservoirs

MICO is a registered trademark of MICO, Inc. MICO is registered in the U.S. Patent and Trademark Office as well as in Australia, Canada, Indonesia, Japan, Peoples Republic of China, South Korea, and the European Community.