



a WABCO company

# PRODUCT BULLETIN

## Hydraulic over Air Relay Valves

### DESCRIPTION

MICO® Hydraulic over Air Relay Valves output air pressure in proportion to the hydraulic input pressure. Hydraulic input pressure, from a component such as a master cylinder or hydraulic control valve, sends a pilot signal to the relay valve to modulate air brake pressure. An example application might be controlling an air braked trailer from a hydraulically braked towing vehicle that has an air power source.

MICO has three Hydraulic over Air Relay Valve designs:

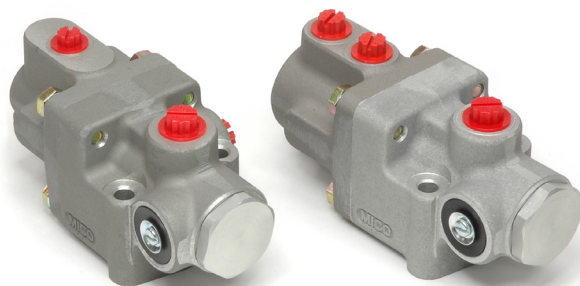
- **Single** input provides one hydraulic pilot port to control modulated air braking pressure.
- **Dual** input provides two independent pilot ports to control modulated air braking pressure. The dual design function is the same as a single design when pilot pressure is applied to either the P1 or P2 port. When pilot pressure is applied to both P1 and P2 ports at the same time, controlled air braking pressure ratio increase proportionally. The P1 and P2 ports of the dual input relay valve can be of different pressure ratios. Steering assist applications may use a dual input design relay valve.
- **Tandem** input functions the same as the single design except it provides redundancy by having two independent pilot pressure ports. Hydraulic pilot pressure can be applied to the P1 and/or P2 port and the pressure ratio remains the same.

Contact MICO for the different hydraulic pressure to air pressure ratios.

### SPECIFICATIONS

Maximum air pressure ..... 150 PSI  
 Maximum fluid pressure ..... 2000 PSI  
 Hydraulic to air pressure ratio..... 3:1 to 21:1  
 Maximum operating temperature..... 250 °F  
 Fluid type..... mineral base hydraulic oil

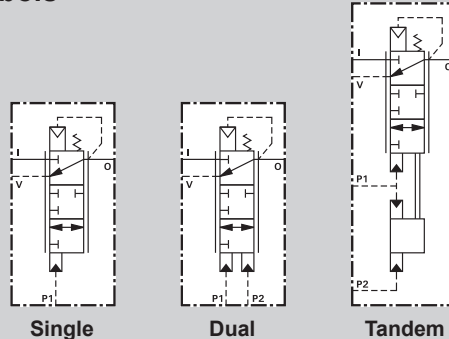
Port sizes..... 3/8-18NPSF (air ports only)  
 #4 SAE J1926/1 ORB (hyd. or air ports)  
 #6 SAE J1926/1 ORB (hyd. or air ports)  
 SAE J2244/1:M12 x 1.25 (hyd. or air ports)  
 SAE J2244/1:M14 x 1.50 (hyd. or air ports)  
 (Contact MICO for other port size requirements)



Single

Dual or Tandem

### Symbols



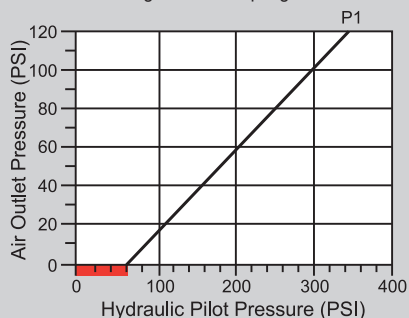
Single

Dual

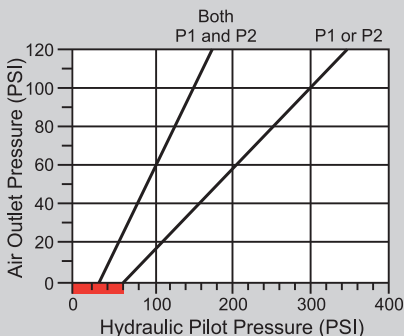
Tandem

### 3:1 ratio examples

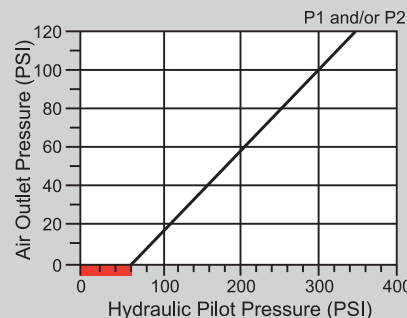
■ = seal drag and return spring force



Single Input

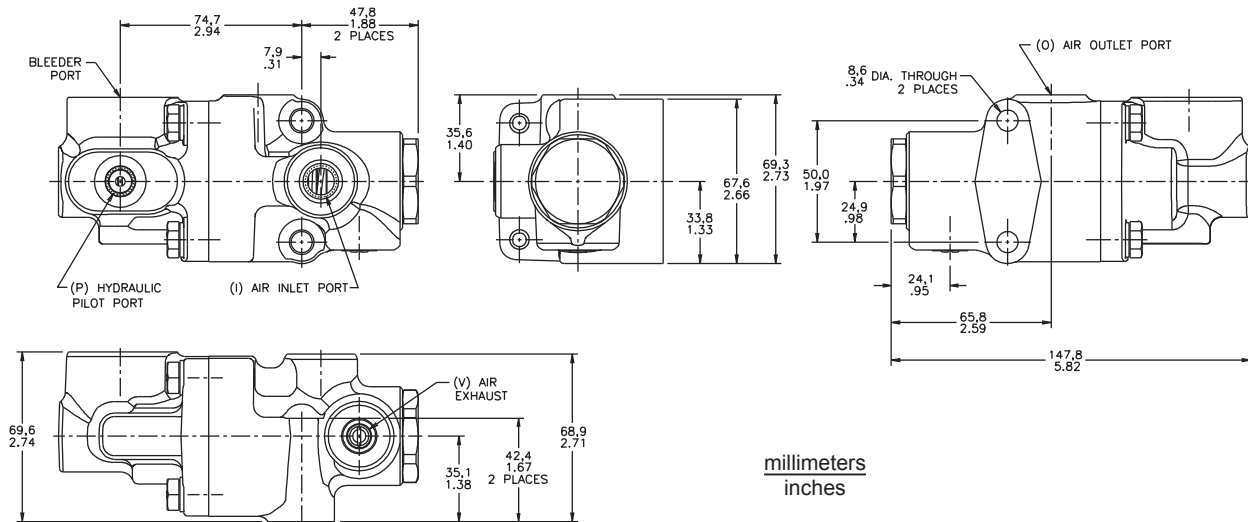


Dual Input

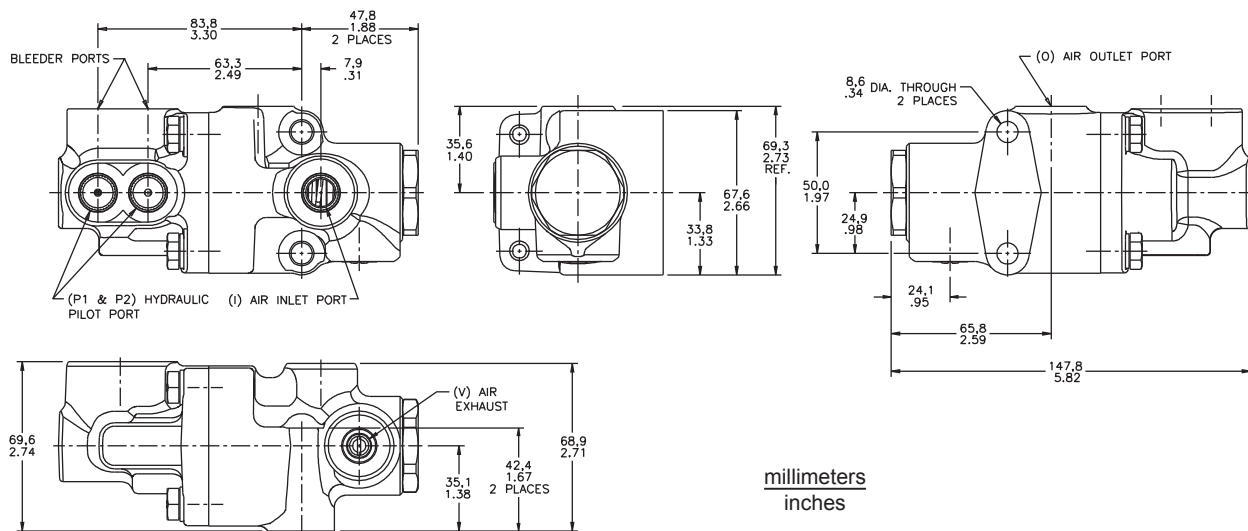


Tandem Input

## Single Input



## Dual or Tandem Input



This document is intended to provide general information about MICO Products. MICO, Inc. has attempted to present accurate information about MICO Products in its catalogs, brochures, and other printed materials. MICO, Inc. is not responsible for errors, inaccuracies, or inconsistencies that may exist in any catalog, brochure, or other printed materials or any damages arising from or related to reliance on information in them. Materials and specifications for MICO Products set forth in catalogs, brochures, and other printed materials are subject to change without notice or obligation. Refer to [www.mico.com](http://www.mico.com) for the most recent versions of our literature. If you have any questions concerning MICO Products, please contact MICO, Inc. All MICO Products and service are sold and provided subject to the MICO Warranty at [www.mico.com](http://www.mico.com) in effect on the date of sale or supply.

MICO is a registered trademark of MICO, Inc. MICO is registered in the U.S. Patent and Trademark Office as well as in Australia, Canada, Indonesia, Japan, Peoples Republic of China, South Korea, and the European Community.



**MICO, Inc.**

1911 Lee Boulevard  
North Mankato, MN U.S.A. 56003-2507  
Tel: +1 507 625 6426 Fax: +1 507 625 3212