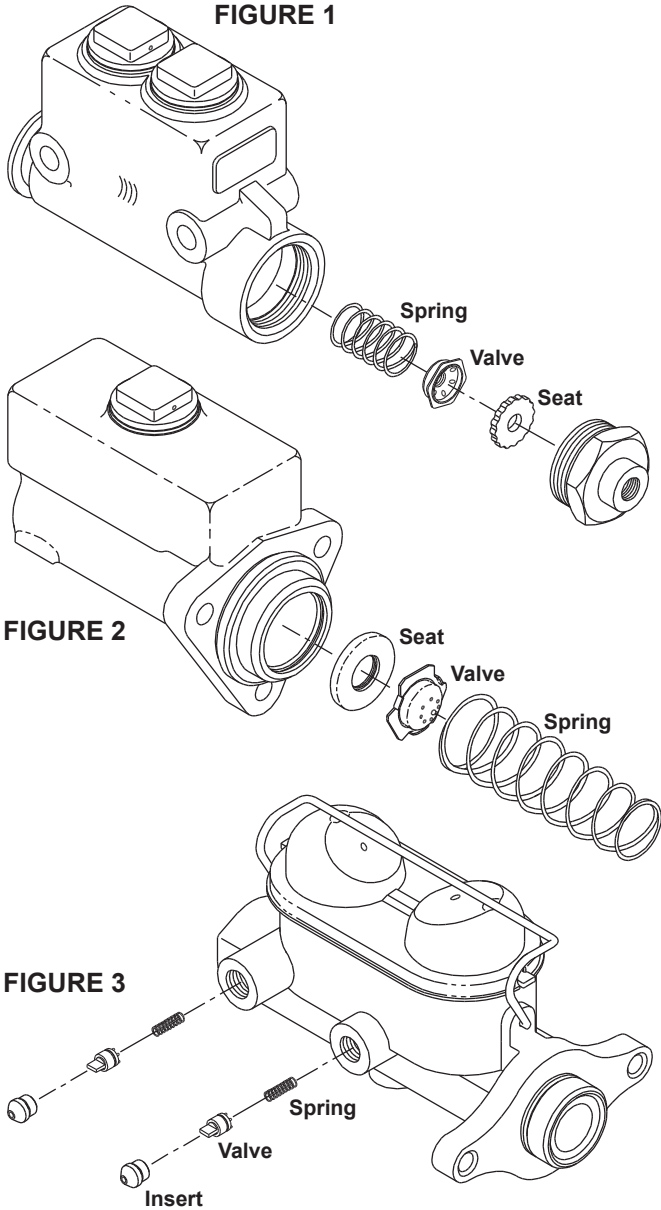




Residual Pressure Valve



⚠ WARNING
Install new residual pressure valve components only if found in original power cylinder.

A disc brake master cylinder is different from a drum brake master cylinder and must not be interchanged.

Residual pressure valves are normally used in drum brake systems. These valves maintain a slight static pressure in the hydraulic system at all times, even when the brake pedal is released. Pressure will vary from 0.34-1.72 bar (5-25 PSI), depending on the system. This residual pressure holds the wheel cylinder piston cup lips tightly against the cylinder walls and prevents air from entering the system when it is at rest.

Residual pressure valves are seldom used in master cylinder outlets that connect to disc brakes. A disc brake system is normally free of residual pressure. If residual pressure is present in a disc brake system, it will hold the brake linings in contact with the rotor resulting in dragging brakes, overheating and unnecessary wear.

Master cylinder fluid levels must be checked periodically and clean fluid from a sealed container added as needed.

A brake system that requires frequent bleeding to maintain a firm pedal, may be an indication of an inoperative residual pressure valve.

This publication is not subject to any update service. Information contained in this publication was in effect at the time the publication was approved for printing and is subject to change without notice or liability. ZF Off-Highway Solutions Minnesota Inc. reserves the right to revise the information presented or to discontinue the production of parts described at any time.



ZF Off-Highway Solutions Minnesota Inc.
1911 Lee Boulevard / North Mankato, MN U.S.A. 56003
Tel: +1 507 625 6426 **Fax:** +1 507 625 3212