

MASTER CYLINDER



Service Instructions

DISASSEMBLY

1. Drain fluid from unit before disassembling.
2. Remove push rod (1) and boot (2) from housing (10).
3. Remove retaining ring (3) and washer (4) from housing.

CAUTION

Retaining ring is under tension of spring (9).

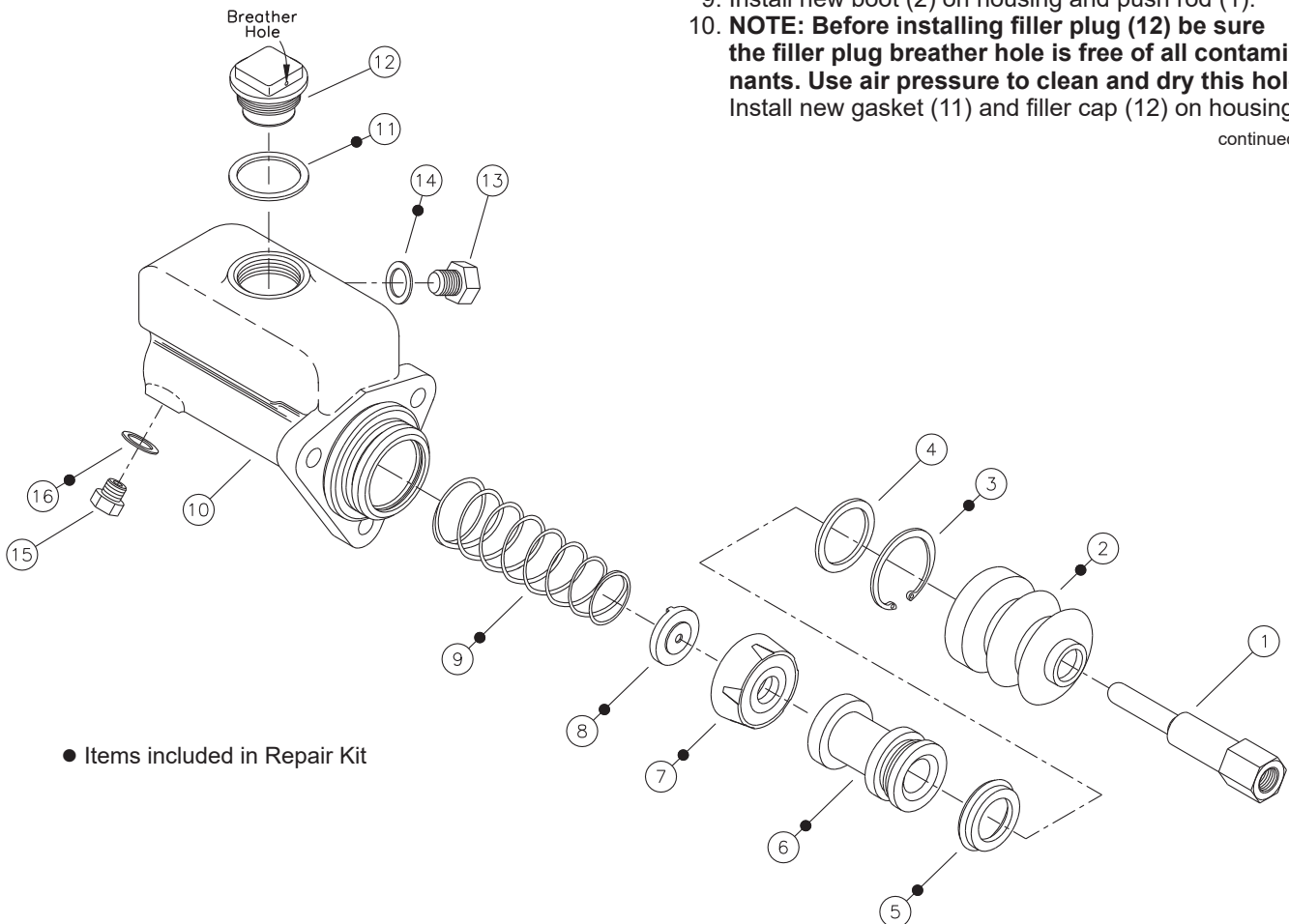
4. Remove piston (6), cup (7), retainer (8) and spring (9) from housing bore.
5. Remove cup (5) from piston (6). Note direction of cup (5). **NOTE: Be careful not to scratch or mar piston.**
6. Remove filler cap (12) and gasket (11) from housing.
7. Remove cap screw (13) and gasket (14) from housing.
8. Remove adapter (15) and gasket (16) from housing.

ASSEMBLY

LUBRICATE ALL RUBBER COMPONENTS FROM REPAIR KIT WITH CLEAN SYSTEM FLUID.

1. Install adapter (15) and new gasket (16) in housing. Torque adapter (15) 29.8-36.6 N·m (22-27 lb·ft).
2. Install cap screw (13) and new gasket (14) in housing. Torque cap screw (13) 74.6-81.4 N·m (55-60 lb·ft).
3. Install new retainer (8) on small end of new spring (9) by bending tabs on retainer around end of spring.
4. Insert spring (9) into housing bore, large end of spring first.
5. Insert new cup (7) into housing bore over retainer end of spring (9). Note direction of cup.
6. Install new cup (5) on piston (6). Note direction of cup. **NOTE: Be careful not to scratch or mar piston.**
7. Install piston (6) into housing bore.
8. Install washer (4) and new retaining ring (3) in housing bore.
9. Install new boot (2) on housing and push rod (1).
10. **NOTE: Before installing filler plug (12) be sure the filler plug breather hole is free of all contaminants. Use air pressure to clean and dry this hole.** Install new gasket (11) and filler cap (12) on housing.

continued . . .



11. Install the master cylinder on the vehicle and connect the fluid lines. Connect the push rod. Fill reservoir and bleed system of air. See form 81-600-001 instructions to bleed this master cylinder. Refer to the vehicle manufacture specifications to bleed the vehicle brake system. Tighten fittings if leaks occur. Make several applications to be sure master cylinder is working properly. **NOTE: All fittings must be inspected for leaks and tightened if leaks occur.**

⚠ CAUTION

Be careful not to over stroke this master cylinder. The master cylinder does not incorporate a piston stop. Over stroking this master cylinder may cause it to leak from push rod end. Maximum recommended stroke for this cylinder is 31.8 mm (1.25 in).

12. After bleeding is completed, fill the reservoir to within 12.7 mm (0.50 in) of top. Torque filler plug (12) 33.9-40.7 N·m (25-30 lb·ft).

This publication is not subject to any update service. Information contained in this publication was in effect at the time the publication was approved for printing and is subject to change without notice or liability. ZF Off-Highway Solutions Minnesota Inc. reserves the right to revise the information presented or to discontinue the production of parts described at any time.

