

Service Instructions

DISASSEMBLY

(Refer to Figures 1 and 2)

1. Remove the master cylinder from the machine by disconnecting the necessary fluid lines. Disconnect the push rod and remove the mounting bolts. Drain fluid from the assembly.
2. Remove push rod (15) and boot (14) from housing cap (11).
3. Loosen cap screws (13) evenly and remove. Separate housing cap (11) from housing (5).

⚠ CAUTION

Housing cap (11) is under tension from springs (7 & 8).

4. Remove piston assembly (9) and springs (7 & 8) from housing (5).
5. Carefully remove piston (10) and cup (12) from housing cap (11). **NOTE: Be careful not to scratch or mar housing cap (11) bore or piston (10).**
6. Remove o-ring (6).
7. Remove end plug (1) and spring (3) from housing (5). Remove o-ring (2) from end plug (1).
8. Remove piston assembly (4) from housing (5) by pushing on piston assembly (4) with a wooden dowel from the large diameter bore end of housing.

ASSEMBLY

(Refer to Figures 1 and 2)

LUBRICATE ALL RUBBER COMPONENTS FROM REPAIR KIT WITH CLEAN MINERAL BASE HYDRAULIC OIL

1. Clean all parts thoroughly and allow to dry before reassembling.
2. Thoroughly inspect housing (5) bore for damage or wear. If damage or wear is present, a new master cylinder may be required.
3. Carefully install new cup (12) and piston (10) in housing cap (11). Note direction of cup (12). **NOTE: Be careful not to damage housing cap (11) bore or piston (10).**
4. Install springs (7 & 8) and piston assembly (9) in housing (5).
5. Install new o-ring (6) in housing (5). Be sure o-ring (6) is properly seated in housing (5) bore.
6. Connect housing cap (11) to housing (5) using two cap screws (13). Tighten evenly and torque 33.9-40.7 N·m (25-30 lb-ft).
7. Install new piston assembly (4) and spring (3) in housing (5). Note direction of piston assembly (4).
8. Install new o-ring (2) on end plug (1). Install end plug (1) in housing (5) and torque 54.2-67.8 N·m (40-50 lb-ft).
9. Install push rod (15) and new boot (14) on housing cap (11).
10. Install the master cylinder on the machine. Connect the push rod. Connect the fluid lines. Bleed the system of air. Tighten fittings if leaks occur. Make several applications to be sure the valve assembly is working properly. **NOTE: All fittings must be inspected for leaks and tightened or replaced if leaks occur.**

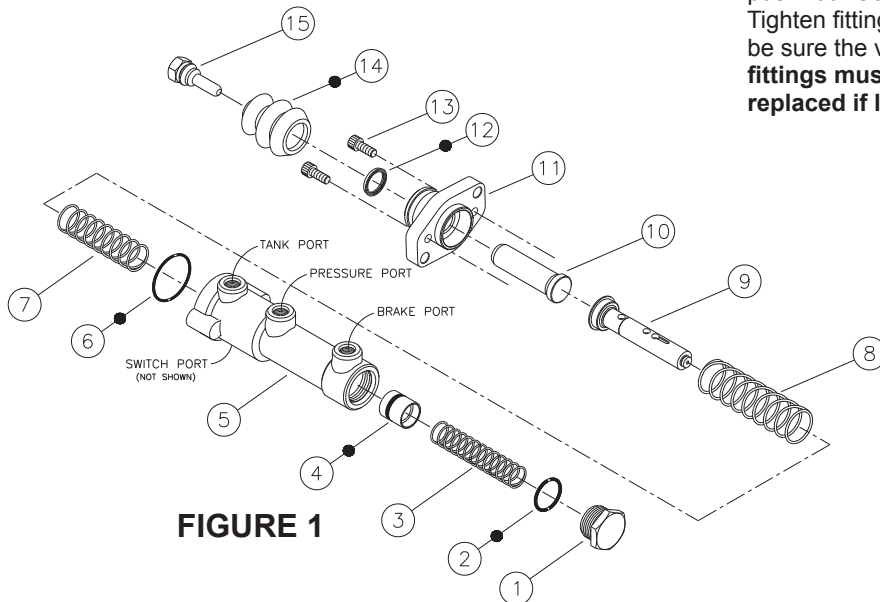


FIGURE 1

● Items included in Repair Kit

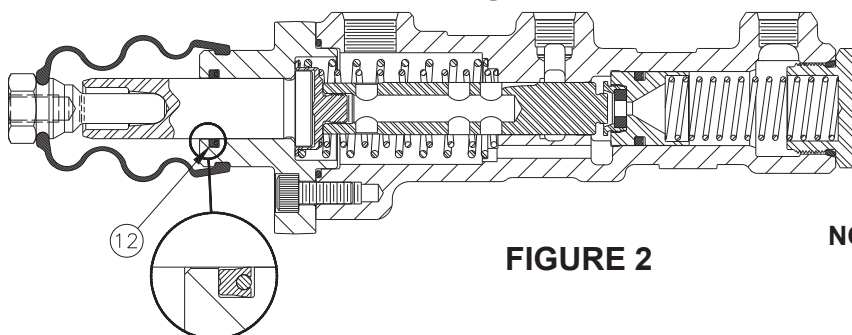


FIGURE 2

NOTE: Master cylinder to be used with mineral base hydraulic oil.

This document is intended to provide general information about MICO Products. MICO, Inc. has attempted to present accurate information about MICO Products in its catalogs, brochures, and other printed materials. MICO, Inc. is not responsible for errors, inaccuracies, or inconsistencies that may exist in any catalog, brochure, or other printed materials or any damages arising from or related to reliance on information in them. Materials and specifications for MICO Products set forth in catalogs, brochures, and other printed materials are subject to change without notice or obligation. Refer to www.mico.com for the most recent versions of our literature. If you have any questions concerning MICO Products, please contact MICO, Inc. All MICO Products and service are sold and provided subject to the MICO Warranty at www.mico.com in effect on the date of sale or supply.

MICO is a trademark and registered trademark of MICO, Inc. MICO is registered in the U.S. Patent and Trademark Office as well as in Australia, Canada, Indonesia, Japan, Peoples Republic of China, South Korea, and the European Community.



MICO, Inc.

1911 Lee Boulevard / North Mankato, MN U.S.A. 56003-2507

Tel: +1 507 625 6426 **Fax:** +1 507 625 3212