

BOOSTED MASTER CYLINDER (Power Assist Section)



Service Instructions

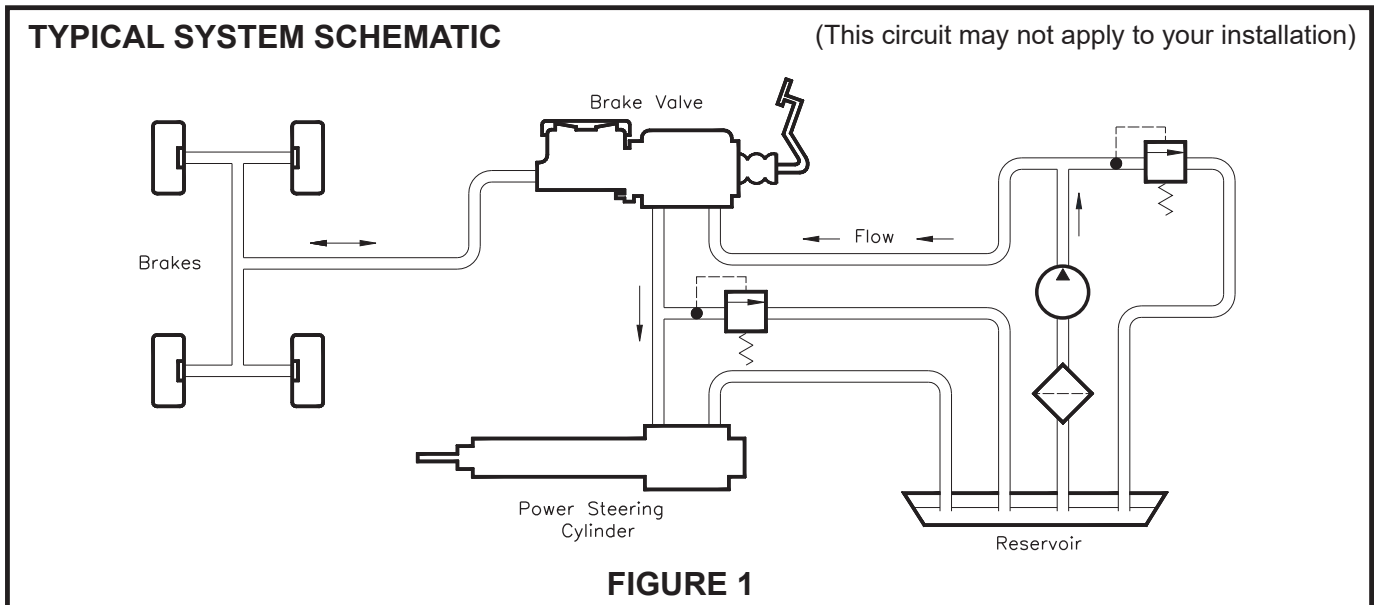
MASTER CYLINDER SECTION - Automotive Brake Fluid
- Mineral Base Hydraulic Oil*

POWER ASSIST SECTION - Mineral Base Hydraulic Oil

This instruction sheet services the Power Assist Section for these model numbers:

02-460-214	02-460-266	02-460-308	02-460-378*	02-460-428	02-460-492
02-460-216	02-460-268	02-460-310	02-460-380	02-460-434	02-460-494*
02-460-224	02-460-272	02-460-318	02-460-382*	02-460-436	02-460-496*
02-460-226	02-460-274	02-460-326	02-460-384*	02-460-440	02-460-498*
02-460-234	02-460-276	02-460-328	02-460-388	02-460-448*	02-460-600
02-460-238	02-460-278	02-460-330	02-460-390	02-460-452	02-460-602*
02-460-242	02-460-280	02-460-342*	02-460-400*	02-460-462	02-460-612*
02-460-244	02-460-292	02-460-344	02-460-404	02-460-468	02-460-622*
02-460-246	02-460-294	02-460-346	02-460-406	02-460-470	02-460-624*
02-460-248	02-460-296	02-460-350	02-460-408	02-460-476*	02-460-626*
02-460-252	02-460-298	02-460-354	02-460-412	02-460-478	02-460-637*
02-460-256	02-460-300	02-460-360	02-460-416	02-460-480	02-460-638*
02-460-258	02-460-302	02-460-370	02-460-418	02-460-482*	02-460-642*
02-460-260	02-460-304	02-460-372	02-460-422	02-460-484*	02-460-645*
02-460-264	02-460-306	02-460-374	02-460-424	02-460-486*	

NOTE: If your product number is not listed, contact ZF Off-Highway Solutions Minnesota Inc. for information.



REMOVING MASTER CYLINDER FROM THE MACHINE AND SEPARATING SECTIONS

(Refer to Figures 2 and 3)

NOTE: 02-460-274, 02-460-342, 02-460-344, 02-460-370, 02-460-372 and 02-460-384 use flat washers.

1. Remove the master cylinder assembly from the machine by disconnecting the necessary fluid lines, disconnecting the push rod, and removing the mounting bolts. Drain fluid from the assembly.
2. Separate the master cylinder section from the power assist section by removing three cap screws and three lock washers or flat washers. **NOTE: Earlier models have a spacer between the sections.**

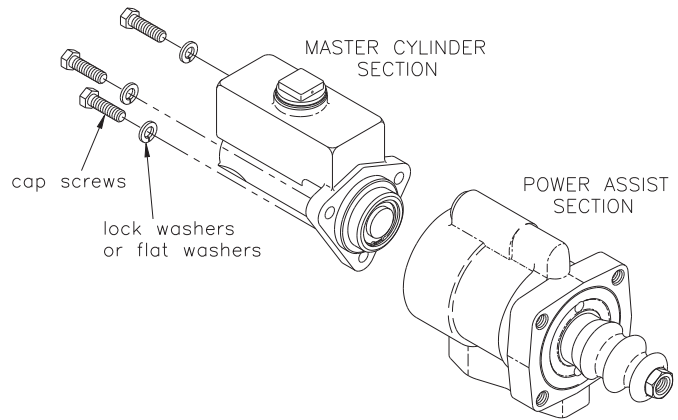


FIGURE 2

CONNECTING SECTIONS AND MOUNTING MASTER CYLINDER ON THE MACHINE

(Refer to Figures 2 and 3)

1. Install spacer between the two sections (only if used on the original design).
2. Attach the master cylinder section to the power assist section with three cap screws and three lock washers or flat washers. If the unit uses lock washers torque 29.8-36.6 N·m (22-27 lb-ft). If the unit uses flat washers torque 47.5-54.2 N·m (35-40 lb-ft). **NOTE: Earlier designs have a spacer between the sections.**

3. Install the master cylinder assembly on the machine. Connect the push rod. Connect the fluid lines. Bleed the system of air. Tighten fittings if leaks occur. Make several applications to be sure the master cylinder is working properly. **NOTE: All fittings must be inspected for leaks and tightened if leaks occur.**

POWER ASSIST DISASSEMBLY

(Refer to Figures 3 and 4)

1. Drain fluid from the unit before disassembling.
2. Remove push rod (1) and boot (2) from power assist section.
3. Loosen end plug (3) using a spanner wrench and remove internal parts assembly (22) from housing (16).
4. Remove spring (15) and retainer (14) from internal parts assembly.
5. Remove end plug (3) from piston (8). Remove o-ring (4) from end plug. Remove retaining ring (7), cup (6), and back-up ring (5) from bore of end plug. Not all models use retaining ring (7). **NOTE: Be careful not to scratch the bore of end plug (3).**
6. Remove piston (10) from piston (8). Remove piston ring (11) from piston (10). **NOTE: Care must be taken when removing piston ring.**
7. Remove retaining ring (13) from piston (8).

⚠ CAUTION

Retaining ring (13) is under tension of spring (9).

8. Remove piston (12) from piston (8). Remove retaining ring (7), cup (6), and back-up ring (5) from bore of piston (12). Not all models use retaining ring (7). **NOTE: Be careful not to scratch piston bore (12).**
9. Remove spring (9) from piston (8).
10. Remove cup (6) and back-up ring (5) from housing (16). **NOTE: Be careful not to scratch housing bore when removing cup and back-up ring.**
11. Remove plug (21) from housing (16) and remove o-ring (20) from plug (21).
12. Remove spring (19), shim(s) (18), and valve stem (17) from housing (16). Be aware of the number of shim(s) (18) removed for reassembly purposes.

POWER ASSIST ASSEMBLY

(Refer to Figures 3 and 4)

Use only mineral base hydraulic oil in the power assist section.

LUBRICATE ALL RUBBER COMPONENTS FROM THE REPAIR KIT WITH CLEAN TYPE FLUID USED IN THE SYSTEM.

1. Clean all parts thoroughly before assembling.
2. Install valve stem (17), shim(s) (18), and spring (19) in housing (16). Install the same number of shims (18) as were removed. **NOTE: Valve stem must move freely in housing.**
3. Install new o-ring (20) on plug (21). Install plug (21) into housing (16) and torque 40.7-54.2 N·m (30-40 lb-ft).
4. Install new cup (6) and new back-up ring (5) in housing (16). Note direction of cup (6).
5. Install new back-up ring (5), new cup (6) and new retaining ring (7) in end plug (3). Not all models use retaining ring (7). Note direction of cup (6).
6. Install spring (9) on piston (8).
7. Install new back-up ring (5), new cup (6), and new retaining ring (7) in piston (12). Not all models use retaining ring (7). **NOTE: Be careful not to mar the piston bore.**
8. Install piston (12) over spring (9) and piston (8).
9. Install new retaining ring (13) on piston (8).
10. Install new piston ring (11) on piston (10). **NOTE: Be careful when installing piston ring.**
11. Install piston (10) on piston (8). Note direction of piston (10).
12. Install new o-ring (4) on end plug (3).
13. Install end plug (3) on piston (8).
14. Install retainer (14) over piston (12) and install spring (15) over retainer (14).
15. Install entire internal parts assembly (22) into housing (16) bore. Use a spanner wrench to torque end plug 128.8-142.4 N·m (95-105 lb-ft).
16. Install new boot (2) on end plug (3) and install push rod (1) into boot.

MASTER CYLINDER SECTION

POWER ASSIST SECTION

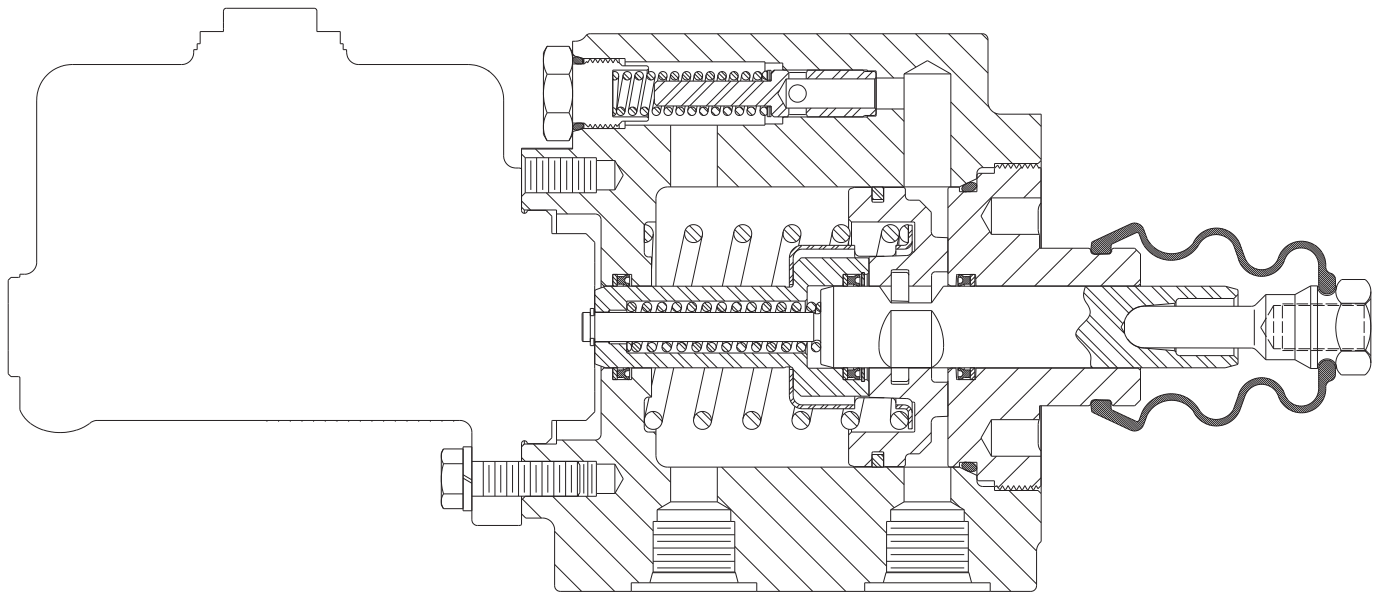
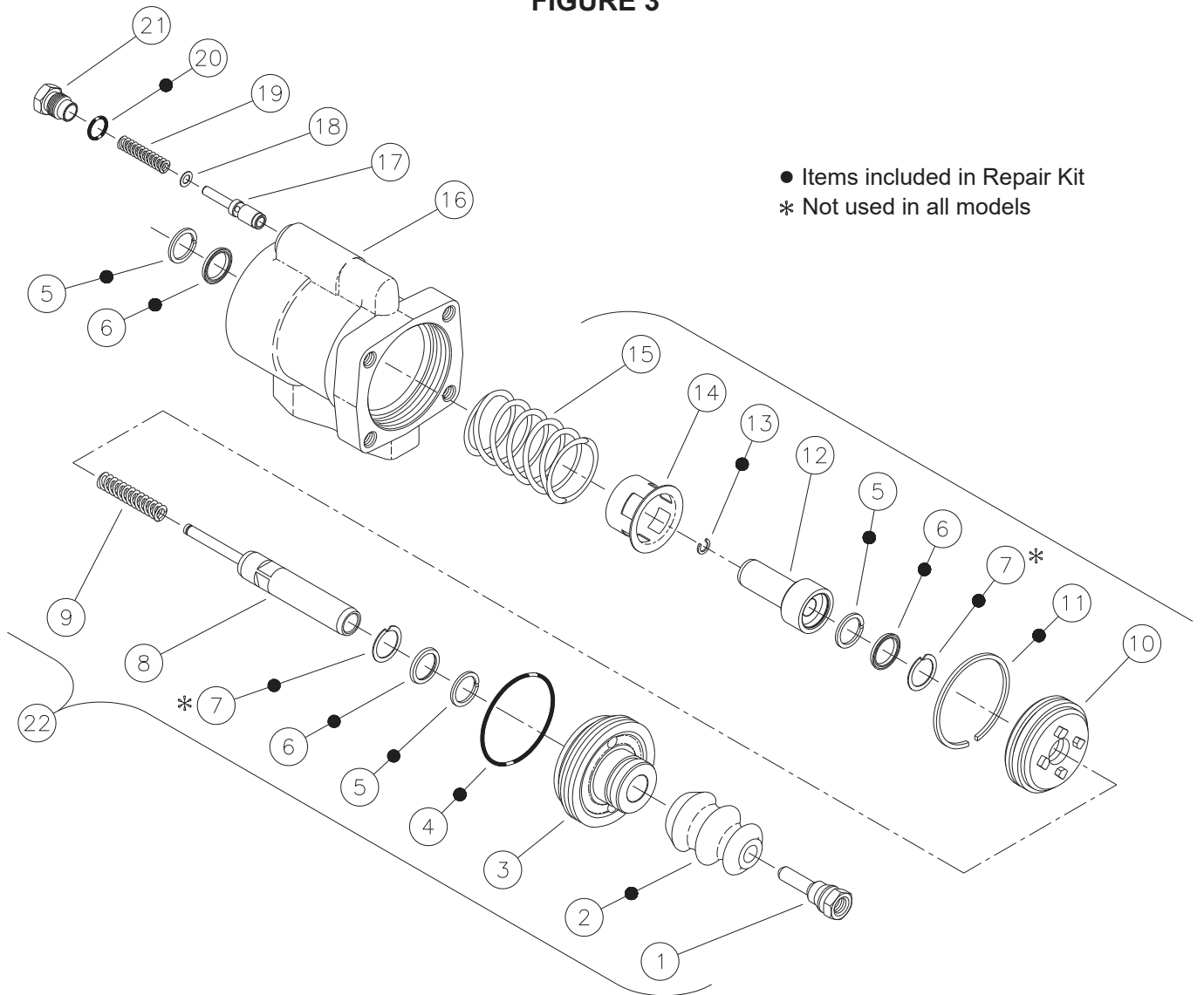


FIGURE 3



● Items included in Repair Kit
* Not used in all models

FIGURE 4

BLEEDING PROCEDURES

NOTE

Use only proper fluid specified by the machine manufacture. Never reuse fluid that has been drained from the system. Be sure that you maintain a high level of fluid in the reservoir during and after the entire bleeding process.

PRESSURE BLEEDING INSTRUCTIONS

1. Master cylinder must be mounted to power assist section.
2. Fill reservoir with proper fluid.
3. Be certain all fittings are tight to avoid leaking.
4. **DO NOT DEPRESS PEDAL.**
5. Connect pressure bleeder into reservoir adapter. Recommended bleeding pressure is 2.07 bar (30 PSI) maximum. **NOTE: Make sure to use correct pressure bleeder for type fluid used in the system.**
6. Open bleeder screw closest to the master cylinder outlet. Most of the air contained in the system will escape by this route. Close bleeder screw.
7. Continue to the next bleeder screw and so on. At each point when air bubbles disappear close bleeder screw.
8. Remove the pressure bleeder.
9. Open bleeder screw at the master cylinder. Actuate cylinder to remove any residual air. Tighten bleeder screw before permitting the pedal to return.
10. Depress the pedal several times. If pedal is spongy, check for system leaks and repeat bleeding process.
11. Fill reservoir to within 12.7 mm (0.50 in) of top. Install filler cap and torque 33.9-40.7 N·m (25-30 lb·ft).

BENCH BLEEDING INSTRUCTIONS

(Refer to Figure 5)

1. This process can be done in a bench vise or on the machine with master cylinder mounted to power assist section.
2. Remove master cylinder filler cap.
3. Connect a length of tubing to an outlet port and immerse the other end below the fluid level in the master cylinder reservoir. Keep reservoir fluid within 12.7 mm (0.50 in) of inside reservoir top.
4. Actuate master cylinder piston with a smooth object large enough to hold the small internal piston from coming out. Slowly stroke and release master cylinder piston. See CAUTION below. Repeat until air bubbles in reservoir have ceased.
5. Remove tubing. This should be done quickly so the loss of fluid will be minimized.
6. If cylinder was bench bled in a vise, it must now be attached securely to the power assist section and mounted on machine. Finish all plumbing connections before continuing to step 7.
7. Bleed remaining air from system by depressing brake pedal and opening bleeder fitting closest to master cylinder. Close the bleeder fitting

- before brake pedal is released. Continue to next bleeder port. In all cases the bleeder fittings must be closed before the brake pedal is released or air will be pulled in through the bleeder and ingest unwanted air in the system.
8. Fill reservoir to within 12.7 mm (0.50 in) of top. Install filler cap and torque 33.9-40.7 N·m (25-30 lb·ft).
9. Be certain all fittings are tight to avoid any leaking.
10. Depress pedal several times. If brake pedal feels spongy, check for system leaks and repeat the bleeding process.

CAUTION

Care must be taken so as not to over stroke this cylinder. The cylinder does not incorporate a piston stop. Over stroking this cylinder may cause it to leak from push rod end of cylinder. Maximum recommended stroke for this cylinder is 31.8 mm (1.25 in).

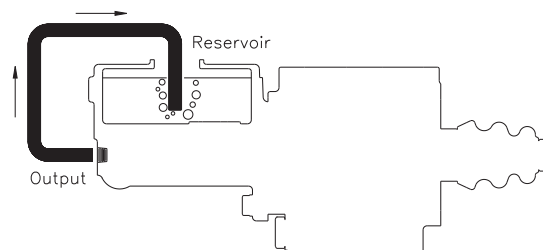


FIGURE 5

This publication is not subject to any update service. Information contained in this publication was in effect at the time the publication was approved for printing and is subject to change without notice or liability. ZF Off-Highway Solutions Minnesota Inc. reserves the right to revise the information presented or to discontinue the production of parts described at any time.



ZF Off-Highway Solutions Minnesota Inc.

1911 Lee Boulevard / North Mankato, MN U.S.A. 56003

Tel: +1 507 625 6426 Fax: +1 507 625 3212