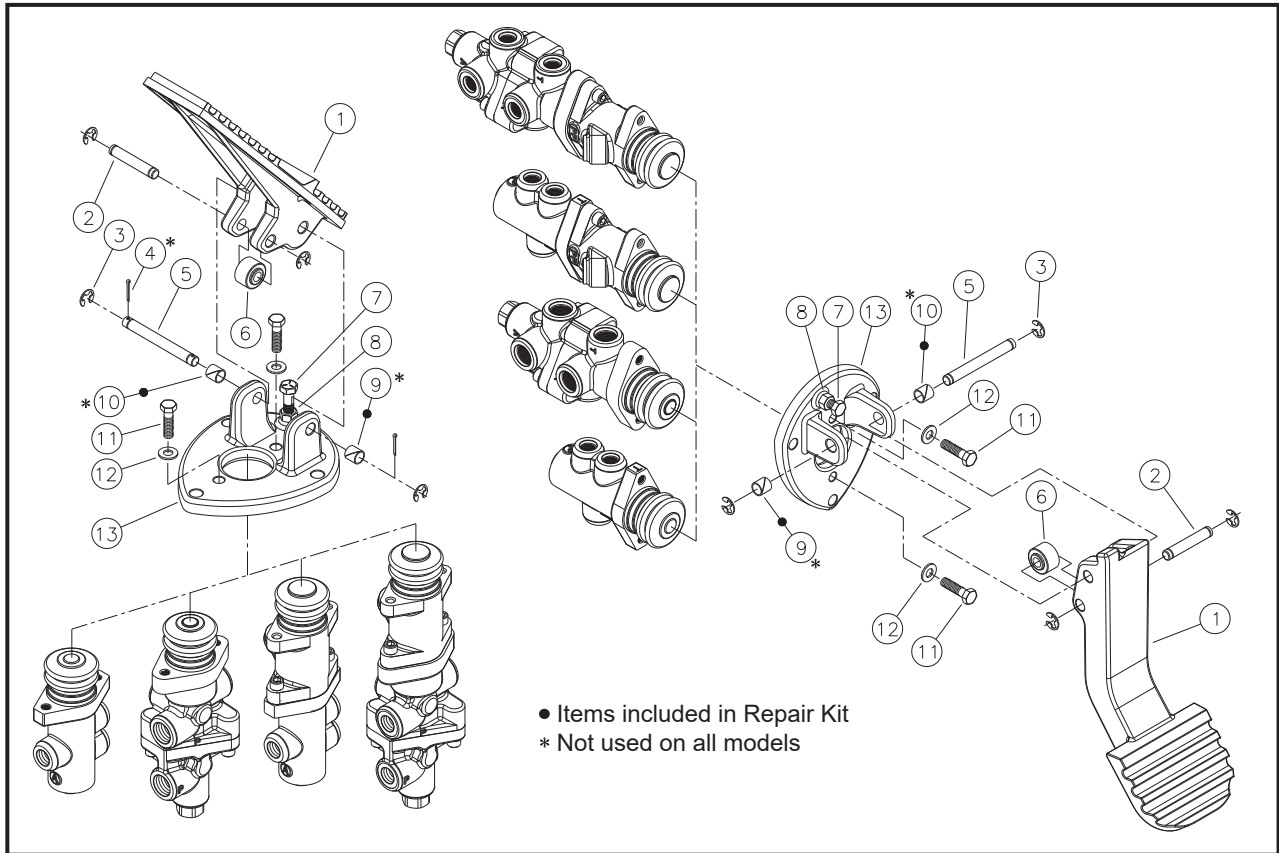


# PEDAL ACTUATED (Modulating Valves)



## Service Instructions



### PEDAL DISASSEMBLY

1. Separate pedal (1) from pedal base (13) by removing one cotter pin (4) and one e-ring (3) from pin (5) and sliding pin from base. **NOTE: Not all models use cotter pins (4).**
2. Remove bushings (9 & 10) from pedal base (13). **NOTE: Not all models use bushings (9 & 10).**
3. Inspect pin (2) and cam (6) to make sure cam is in good working order and moving freely. It is unnecessary to remove pin (2), cam (6), cap screw (7) or nut (8) unless damaged. **NOTE: Not all models use cap screw (7) or nut (8).**
4. Separate valve assembly from base (13) by removing cap screws (11) and washers (12).

### PEDAL ASSEMBLY

#### NOTE

Before assembling pin (5) lubricate with a good quality polymer use moly grease.

1. Attach valve assembly to base (13) using cap screws (11) and washers (12). Torque cap screws 24.4-29.8 N·m (18-22 lb·ft).
2. Install new bushings (9 & 10) in base (13). **NOTE: Not all models use bushings (8 & 10).**
3. Align pedal (1) between ears of pedal base (13) and insert pin (5). Install e-ring (2) and cotter pin (4). **NOTE: Not all models use cotter pins (4).**

#### NOTE

If cap screw (7) or nut (8) are loosened or removed, they must be properly adjusted. With all parts assembled, adjust cap screw (7) to allow the valve spool to fully release. After adjustment is made torque nut (8) 24.4-29.8 N·m (18-22 lb·ft). **NOTE: Not all models use cap screw (7) or nut (8).**

This publication is not subject to any update service. Information contained in this publication was in effect at the time the publication was approved for printing and is subject to change without notice or liability. ZF Off-Highway Solutions Minnesota Inc. reserves the right to revise the information presented or to discontinue the production of parts described at any time.

