

# FLOW CONTROL VALVE



## Service Instructions

### NOTE

Do not remove the internal components from housing (5) bore while disassembling the flow control valve.

### DISASSEMBLY

(Refer to Figure 1)

1. Remove boot (12) from piston (11) and housing (5).
2. Remove piston (11), springs (9 & 10), and retainer (8) from housing (5).
3. Carefully remove cup (7) and seal (6) from housing (5) bore. **NOTE: Be careful not to scratch or mar housing bore.**
4. Remove plug (1), spring (3), and pin (4) from housing (5). Remove o-ring (2) from plug (1).

### ASSEMBLY

(Refer to Figure 1)

LUBRICATE ALL RUBBER COMPONENTS FROM REPAIR KIT WITH CLEAN TYPE FLUID USED IN THE SYSTEM.

1. Wash all parts thoroughly using clean solvent. Be sure the components that are to remain assembled in housing (5) bore are thoroughly flushed with clean solvent.
2. Install new o-ring (2) on end plug (1).
3. Install pin (4), spring (3), and plug (1) into housing (5). Torque plug (1) 47.5-54.2 N·m (35-40 lb·ft).
4. Carefully install new seal (6) and new cup (7) in housing (5) bore. Note direction and order of seal (6) and cup (7). **NOTE: Be careful not to scratch or mar housing bore.**
6. Install springs (9 & 10) and retainer (8) in piston (11).
7. Carefully install piston (11) assembly into housing (5) bore.
8. Install new boot (12) on housing (5) and piston (11).

### ● Items included in Repair Kit

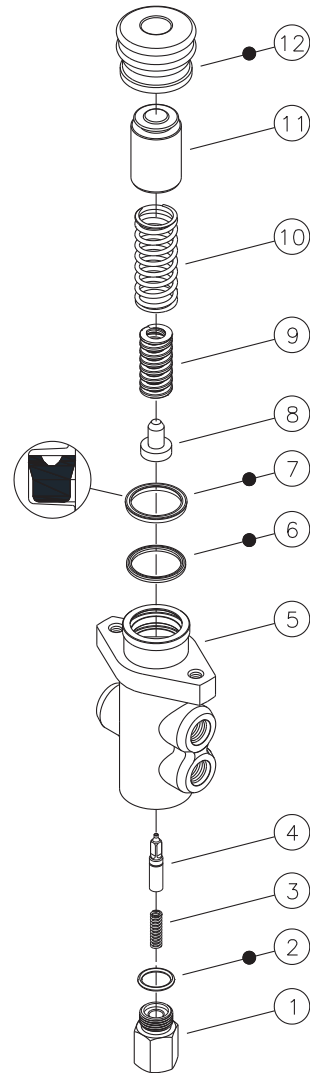


FIGURE 2

This publication is not subject to any update service. Information contained in this publication was in effect at the time the publication was approved for printing and is subject to change without notice or liability. ZF Off-Highway Solutions Minnesota Inc. reserves the right to revise the information presented or to discontinue the production of parts described at any time.



