

# MULTIPLE DISC BRAKE (SAE A size)



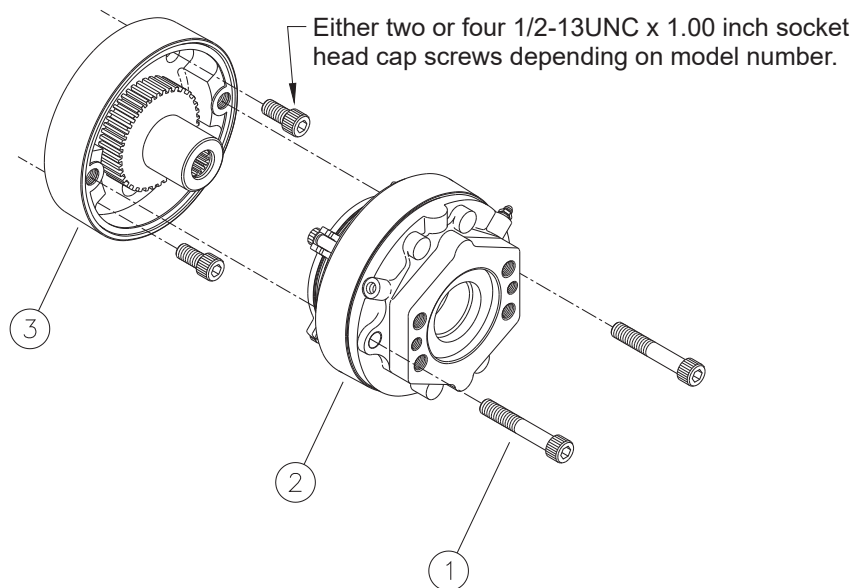
## Mounting Instructions

### MOUNTING PROCEDURE

1. Remove two socket head cap screws (1) and separate cover/shaft assembly (3) from brake module (2).
2. Attach gasket to cover/shaft assembly (3) and, depending on brake module, install on gearbox using either two or four 1/2-13UNC x 1.00 inch socket head cap screws, not provided. Torque 108-122 N·m (80-90 lb-ft).
3. Lubricate threads on socket head cap screw (1) and carefully assemble brake module (2) to cover/shaft assembly (3). Torque 108-122 N·m (80-90 lb-ft).

### ⚠ CAUTION

Care must be taken to assure cover/shaft assembly (3) and brake module (2) are seated properly prior to installing socket head cap screws (1). Damage will occur to rotor stack or shaft snap ring if not properly seated.



This publication is not subject to any update service. Information contained in this publication was in effect at the time the publication was approved for printing and is subject to change without notice or liability. ZF Off-Highway Solutions Minnesota Inc. reserves the right to revise the information presented or to discontinue the production of parts described at any time.

